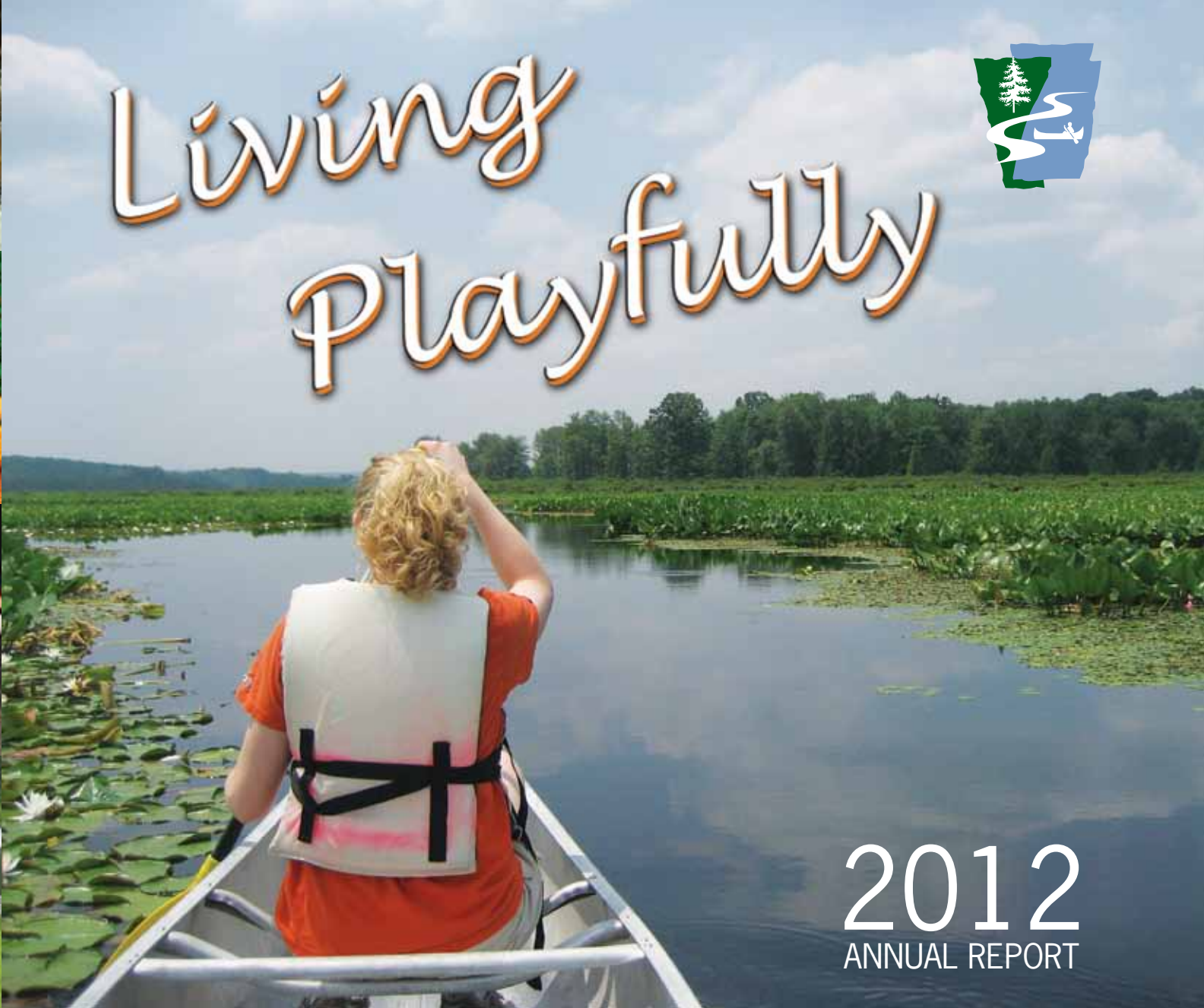


# The YEAR of



# Living Playfully



2012  
ANNUAL REPORT

## MISSION:

PPFF's mission is to promote and support the natural and cultural resources of Pennsylvania's state parks and forests through leadership in recreation, education, conservation, and volunteerism.

## VISION:

PPFF will build the constituent voice for Pennsylvania's state parks and forests to ensure the long term sustainability of these public lands for the benefit of present and future generations.

## Table of Contents

Page 2	Thoughts on 2012 We Moved!
Page 3	DCNR Secretary's Message Chairman's Message
Page 4	Playing with Partners
Page 5	Remembering Maurice Goddard
Page 6	Fun With Stuff
Page 8	Fun in the Neighborhood
Page 12	Play "at Work"
Page 14	Playing with Friends
Page 16	Winning is Fun - 2012 Awards Banquet
Page 18	You Make it Fun
Page 19	Financial Overview
Page 20	Board of Directors and Staff

# The YEAR of *Living Playfully*

## Thoughts on 2012 and *Living Playfully*

*"A hundred times every day I remind myself that my inner and outer life depend on the labors of other men, living and dead, and that I must exert myself in order to give in the same measure as I have received and am still receiving."*

~ Albert Einstein

Many of you who know me recall that I am a fan of Albert Einstein. What I've always admired about Einstein was his, some might say, split personality. Here was a man considered to be the very embodiment of braininess and yet he is often photographed in a zany pose. The quote here calls to the deepest part of why we do the work we do at the Foundation—to build upon the legacy of conservation in Pennsylvania while paying forward conservation, recreation, and passion for the outdoors to future generations. Like Einstein, we tackle our mission with a playful attitude—much like we have tackled this 2012 annual report.

Life is too short to be serious all of the time—and research shows that the more time spent outdoors, the more time spent with family and friends, and the more time spent in nature all contribute to longevity and better health. So why not be less serious? Why not take your lunch at a picnic table in a state park or state forest, or spend a Saturday with a child skipping stones on a lake?

Who best depicts childhood better than Dr. Seuss? Throughout the report you will find quotes from Dr. Seuss that we believe sum up simple life lessons we might all carry with us. We also surveyed our board for their favorite memories of play... and share some of these with you, as well. Much was accomplished in 2012, our **Year of Living Playfully**, ...*while playing!* Enjoy the following pages, and check in with us on our website, social media, or email to find out how we keep bringing play to you in the great outdoors.

*Yours in the Outdoors,  
Marci*

*"Think left and think right  
and think low and think high.  
Oh, the thinks you can think up  
if only you try!"*

~ Dr. Seuss,  
*Oh, The Thinks You Can Think!*



## WE MOVED!

Certainly worth noting in 2012 is our change in real estate!

While the Foundation's staff, board, and members are all right at home in every state park and forest, we do need a hollow tree to collect our mail and answer our phone!

In May, we moved our office from downtown Harrisburg to Camp Hill.

Our new address is:  
1845 Market Street,  
Suite 202,  
Camp Hill, PA 17011

Cover Photos Credits:  
(top to bottom) Colleen Rhoades,  
Erin Ruggles, John Rush,  
Jennifer Esken  
(main) Matt McKeehan  
(back) Colleen Rhoades



Photo credit: Pam Melzger

## Message from the DCNR Acting Secretary Ellen Ferretti



One of my favorite photos in my office at DCNR is of a group of young children on a hike at Kings Gap Environmental Education Center. The boy and girl in the forefront are staring wide-eyed, mouths gaping at something up high. We don't see what they are looking at, but we can feel their amazement, their sense of wonder at nature.

That photo symbolizes to me what we all work for at DCNR and PPFF each day. We protect these lands and enhance our facilities so these children and many generations to come can stand in awe of their natural resources.

Growing up, my family spent many hot summer days picnicking at Tobyhanna and Gouldsboro state parks and I carried on the tradition with my three kids, tent camping at Ricketts Glen and spending days exploring Frances Slocum. State parks provided an affordable family outing or vacation, and I was grateful these natural playgrounds were in my backyard.

My connections to our state forest system came a little later in life when my environmental career work in northeastern Pennsylvania got me involved with conserving lands which became part of the Lackawanna State Forest. I was sad it took me so long to discover the bounty and beauty of our state forests, and now make every effort to inform our citizens of the values of Pennsylvania's 2.2 million acres of forest land.

I now find myself in the humbling position of leading the agency charged with protecting those lands. It goes without saying that the DCNR staff are top-notch professionals who make the job of secretary much easier. But the work we do and decisions we make are challenging and have lasting impact. I assure you, I will do everything I can to continue the fine legacy of this agency.

We will continue to rely heavily on our partnership with PPFF to raise funds for needed infrastructure and programs and garner appreciation of our parks and forests. I applaud PPFF's constant efforts to seek out new and innovative sources of funding for our public lands with its creative campaigns and promotions, friends groups, and volunteer coordination.

We must nurture our young to appreciate the wonders of nature. We must make it easy for everyone to find time to play in the outdoors. We must always be reminded of the wide eyes and open mouths, for they will see and speak for the future of our lands.

## Message from PPFF Chairman Rob Wonderling



*Play Your Way!*

From vintage games like capture the flag, bug and beetle races, scavenger hunts, and burlap sack races to more modern disc golf, KanJam, and 24-hour birder competitions, our state parks and forests provide so many scenic places for low cost, good times outdoors.

If you got the gear—grab a bow, bike, boat, or bamboo pole and head out to your favorite spot or check out what may become your NEW favorite spot. If you like to paint, write, read, or sing opera (...the latter I attempted rather poorly at Hickory Run State Park years ago), then play that way in our parks and forests.

The list of ways to play is as endless as our mountains and our imagination. Hopefully, your visit will inspire you to join the hundreds of volunteer friends, contributors, and public servants who spend their time, energy, and resources to make these public lands even more accessible—and FUN—for everyone. The hours expended each year to clear trails and invasive species, build docks, boat launches, and bird houses or organize park and forest community events make Pennsylvania parks and forests among the best in our nation.

On behalf of the Board of Directors of the Pennsylvania Parks and Forests Foundation, thank you for your interest and commitment to our most treasured natural assets, and thank you for giving all of us the opportunity to play in our own "Pennsylvania Way."



Volunteers and supporters do their part for parks and forests across Pennsylvania.

## RK Mellon Foundation Helps on Two Fronts

The **RK Mellon Foundation** funded a two-part western Pennsylvania initiative. First, Mellon agreed to help grow our friends groups in western Pennsylvania by introducing us to the **Bayer Center for Nonprofit Management**. Working with Bayer, we conducted a comprehensive survey of our chapters to better understand the needs of each group. Training modules in five areas were developed: fundraising, advocacy, volunteer management, board development, and technology. Members of the Bayer team visited our western Pennsylvania chapters, providing them with tools and practical advice. *The materials are available for all to use on our website under the Friends Training tab.*

The second part of the grant looked at new ways to think about food service. The proposed approach develops partnerships with culinary arts programs in local trade schools, colleges, and community colleges; explores local food sources; and develops sustainable business models.

A feasibility study was completed, and we are currently gathering additional data so we can better understand this potential new way of looking at food service. Watch for more in the coming year!

# Playing with PARTNERS

## 2012 was The Year of *Living Playfully* — So How Fun WAS it?

**Right up front we wanted to shout out loud that fun isn't JUST for kids.** We learned from everyone - PhDs and 8-year-old checkers champions - when it comes to play, we gotta have it. Play is an important part of a healthy lifestyle, as it keeps us fit, stimulates the brain, decreases stress, builds trust and social skills, produces learning, and builds memory. Play has also been found to decrease violence by developing skills to cope with stress. We spent the year offering ideas, hosting events, and partnering with PA communities to literally turn over every stone and find the fun in our state parks and forests. From all accounts - we played hard, had fun, and jammed more good times into one year than we ever thought possible!

## What are Pennsylvania's State Parks and Forests Worth.... A Million Memories

As a fan of our state land system, you already know that parks and forests improve health, clean air and water, increase property values, improve quality of life and are economic tourism engines for the commonwealth. But, we asked ourselves, do people who don't spend time in the outdoors know it as well? And how do we enlist their support for these great assets?

With a grant from the **Heinz Endowments**, we were able to procure the services of **Payton Communications** and **KrisP Communications**, consultants with years of practical experience in reaching the public. We launched a messaging campaign to help us better explain the value of state parks and forests. The multi-faceted program included a review of our materials, focus groups, message development, plans (social media, public relations, elected officials, volunteer recruitment, corporate development), as well as training materials for outreach, volunteer recruitment, and more. The consultants then hit the road with us to share the newly gained knowledge with our chapters. *The materials are available for all to use on our website under the Friends Training tab.*



"You have brains in your head.  
You have feet in your shoes.  
You can steer yourself any direction you choose.  
You're on your own.  
And you know what you know.  
And YOU are the one who'll decide where to go..."

~ Dr. Seuss,  
*Oh, the Places You'll Go!*

## Accessible Recreation

We received a grant from **Dominion Foundation** to purchase two adaptive kayaks and gear for Region 2 state parks. Emily Borcz, regional educator, was sponsored by PPF to attend an American Canoe Association Train the Trainer program in adaptive kayaking. This was first in a series of purchases and trainings initiated by PPF to make state parks and forests more accessible to all.

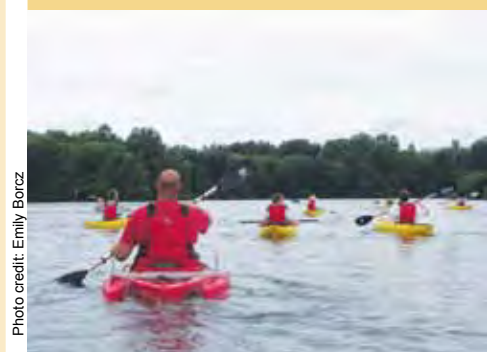


Photo credit: Emily Borcz

"State parks and forests provide local opportunities for respite and recreation in both economic upswings and downturns..."

## Guardians of Play

The draft 2012-13 budget for the state was not, in our minds, play friendly. It zeroed out the line item for revenue from the Keystone Recreation, Parks, and Conservation Fund to the Department of Conservation and Natural Resources. The proposed \$30 million budget elimination for the 2012-2013 fiscal year would have eliminated critical financial support for major maintenance and improvements in state parks and forests, as well as investments in community recreation.

Along with our conservation partners, Foundation President Marci Mowery walked the halls of the capitol in support of the fund's restoration. It was (and is!) a simple message with an essential fact: state parks and forests offer respite and recreation, providing health and economic benefits in both economic upswings and downturns. It is not an expense, but a priceless investment.

In the end, our collective voices were heard, and through our cooperative efforts and strong leadership by members of the Pennsylvania General Assembly, the Fund was preserved. The Foundation would like to express our gratitude to leadership and supporters for protecting this critical investment. *Long live play!*



*The dedicated team of Mary and Jack Bowser filled their entire challenge card by visiting every one of the **Goddard parks** in the span of three weeks, putting over 2,000 miles on their car and smiles on the faces of PPF staff as their photographs came in to the office.*



*The metric century ride participants endured unseasonably cold weather and appreciated the support of our sponsors.*



## A Year Remembering Maurice Goddard

September 2012 marked the 100th anniversary of the birth of **Maurice K. ("Doc") Goddard**, recognized by many as the Father of Pennsylvania's state parks. The Foundation, a key partner in the Goddard Legacy Project, celebrated Doc's life and accomplishments. We hosted a Goddard Challenge - PPF's very own version of the classic Bingo game. Players visited Goddard-centric sites across the commonwealth, filling a row, column or diagonal on the card with items—from parks started under Goddard's tenure to viewing the documentary. (*Winner of the Goddard Challenge was the team of Mary and Jack Bowser, pictured at far left.*) Another Foundation-sponsored event was the metric century bike ride (100 km or 62 miles) from Pinchot to Codorus State Parks.

A birthday party included many local conservation organizations, showings of the documentary, the passage of state House and Senate resolutions recognizing Goddard's accomplishments, a presentation to the Capitol Preservation Committee, and articles in the press.

The celebration was a wonderful mix of conservation organizations, recreation groups and government agencies—just the kind of coalition building and "everybody has a voice" gathering that Doc would have loved.

“Play equipment is a welcomed sight for families visiting state parks. And once they look around, I hope they explore the natural surroundings... the small creek, the tree and perhaps a game of hide and seek.”

~ Gary,  
Board Member

“Look at me!  
Look at me!  
Look at me NOW!  
It is fun to have fun but  
you have to know how.”

~ Dr. Seuss,  
The Cat in the Hat

# Fun with Stuff

## TAKING TECHNOLOGY OUTSIDE — *Now that's FUN*

What if we told you that the adventures on your video games and computers can be experienced (hold on to your hat!) off of your couch, out of your house, and (wait for it...) in the parks and forests near your home! There was fun to be had and last year kids of all ages had a blast with these ways to find, navigate and access the adventures in our state parks and forests.



### Popularity of the PASSPORT continued to grow in 2012

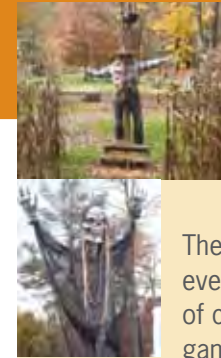
This 135-page passport, developed through a grant from Chesapeake Energy, includes maps, a history of the state's park and forest system, a brief description and most memorable feature of each state park and forest, and additional online resources.

*Governor Tom Corbett has his very own PASSPORT stamped.*

### You're ONLINE? We're ONLINE!

We've become a popular spot as part of the online community, kind of like that house on the block where everyone goes for the best Halloween candy. In addition to our well-traveled website, look for us at:

- **FRIDAYS with PAM** – a popular, upbeat weekly eBlast
- **OUT AND ABOUT IN PA** – our online blog providing a venue for sharing ideas, experiences, and thoughts
- **Explore!** – a bimonthly eZine with over 90,000 readers
- **PPFF on Facebook** – we have 2500 new friends!
- **Penn's Stewards** – our newsletter published 3X/year
- We're on **Pinterest**, **Twitter**, and now have interesting and educational clips on **YouTube**
- **Resources and materials are always readily available** – fact sheets, newsletters, videos, photo galleries, press releases, and more are a click away. We expanded our Training section to include materials available for any non-profit group to use. Also new on the website, our **Wish List** identifies projects in state parks and forests we hope to accomplish. If you haven't seen the Wish List, it's worth checking out!



## A Scary-good Idea— Gets a Boost with a Foundation Managed Account

The Boo Crew at **Pymatuning State Park** hosts an annual event each year. The Halloween Spooktacular attracts hundreds of campers and visitors for hayrides, crafts, costume contests, games, and a dance. The events raised \$14,000, plus an additional \$1,000 donated by PNC Financial and Charitable Trusts. The Bureau of State Parks provided a matching \$15,000 grant and their new playground was underway!

The new playground at Jamestown Campground replaced the outdated wooden structure at the campground beach. Future fundraising goals of the Boo Crew include expansion of the playground with the purchase a climbing wall, an additional slide, and new swings.

According to park management, the Halloween event at Pymatuning benefits not only the playground build, but the Bureau of State Parks and the surrounding community in numerous ways as well. The Jamestown Campground has practically sold out of campsites each event weekend and, as a result, the Bureau has collected an estimated \$30,000 more in camping revenues.

*The Boo Crew raised funds for this new playground at the Jamestown Campground*

Photo credit: Ryan Borcz



“I have a two year old daughter, so watching her enjoy her times at the playground not only brings me joy, but allows me to relive some of my playtimes through her.”

~ Ryan, DCNR

## PARTNERING with DCNR



We continue to work in cooperation with DCNR on projects and explore ways in which we can best assist. Some of the ways we have helped this year:

- The 2012 welcome kit, printed free of charge for DCNR through a partnership with PPFF and Good Solutions Group
- The upcoming printing of the 2013 map through Parks by Nature along with the Elk State Forest Public Use Map
- Presented at park managers' meetings, and coordinated and recruited speakers for a breakout session
- Coordinated speakers for education staff training as it relates to accessibility
- Wrote, edited and distributed a bimonthly e-zine (Explore) in cooperation with DCNR
- Coordinated and hosted two training sessions in accessible recreation for PPFF staff, friends groups, state park staff and state forest staff
- Wrote successful grants for projects in state parks and forests (as well as several unsuccessful ones)
- Managed a variety of accounts that enable parks and forests to accept private donations

In July, we held a *Take Five (Lines) Cinquain* poetry contest.

What's a cinquain? It's a very simple, very structured, five-line poem. And, yes, winning included chocolate! And the first place winner was (poetic drumroll, please)...

**Stephanie Miller of Harrisburg** with this evocative entry:

*Cabins  
Rustic-Homey  
Warming-Welcoming-Sharing  
Making Memories for Life  
Shelter*

"You were not born to just fit in, you were born to stand out!"  
~ Dr. Seuss,  
*The Cat in the Hat*

# Fun in the NEIGHBORHOOD

## Fun in the Neighborhood — and across the state!

We love our partners and friends in the community. Our shared interests carry us toward the next great idea. We are truly grateful to our many community allies and can't wait to add more good times, good ideas, and good works.



*Cinco de Mayo clean up in Swatara State Park*

### Aren't Chocolate and FUN Actually the Same Word?

This year was the start of a beautiful relationship with the Hershey Company. They generously provided a supply of Take Five bars for us to use in promoting our work and everything that's fun about *Taking Five in the Outdoors*.

Our launch was on Cinco de Mayo, with five volunteer and friends events at Ohiopyle, Swatara, Greenwood Furnace, and Ridley Creek, and Promised Land State Park. Streams were cleaned, trees were planted, roadway trash eliminated, and trails cleared — or perhaps you could say flushed, as Foundation President Marci Mowery removed an entire porcelain toilet from the trail at Swatara State Park.

In early June, we launched our *Take Five in the Outdoors* photo contest.

Incorporating our popular *Dogs in the Outdoors* photo contest (with doggie prizes provided by canine outfitter, RuffWear), photographers submitted their best pictures in the categories of Appreciation of Beauty, Kids in the Outdoors, Outdoor Recreation, and Volunteers in Action (as well as Dogs in the Outdoors) for a chance to win a carton of Take Five bars, state park gift cards, or a RuffWear packable water bowl or dog bed.



Erin Ruggles - Blue Knob State Park  
*(Higher! Push me higher!)*

### An Affinity for BUSINESS

New in 2012 is our Affinity Membership Program! Businesses across the Commonwealth have agreed to provide a discount to PPF members, recognizing that their continued success is irrevocably tied to the support of park and forest users. Thank them with your business! For a listing of all of our affinity members, visit [paparksandforests.org/benefits.html](http://paparksandforests.org/benefits.html)

It's noteworthy that 2012 was a year of preparation and while you will hear more about projects completed in the 2013 Annual Report, you don't have to wait! Log on to the website as a member and learn how to be a part of what's happening right now. [www.PaParksAndForests.org](http://www.PaParksAndForests.org)

### We're EVERYWHERE!

Every year, the Foundation strives to not only visit every park and forest, but to engage local communities, civic clubs, and youth groups by attending events and engaging in discussions about our public lands. A sampling of the places you could find us in 2012 include:

### LOCALLY:

We promoted memberships and awareness of PPF at baseball games in Harrisburg (Senators) and York (Revolution). In fact, at the Senators' Community Organization Day, the Foundation was invited to set up an informational table, throw out the first pitch, promote on their radio broadcast, and participate in a pre-game interview.



Proving baseball's unrivaled popularity — Marci's cell phone was set ablaze with messages from friends and family reporting, "I saw you on the MEGATRON at the game!"

### Other LOCAL EVENTS:

- The "Bee Local" Festival at the Frederickson Library in Camp Hill
- The dedication of an historic marker for Ralph Abele

As part of the "Bee Local" Festival, the Frederickson Library created a PPF exhibit promoting our work and our public lands.



### ACROSS The STATE:

Supporting the Wilkes Barre YMCA's KAZ (Keystone Active Zone) Passport program, designed to introduce people of all ages to the wonders of local outdoor resources. By providing prizes, the Foundation helped promote participation and was included as sponsors on the 30,000 program posters distributed in schools and locations through Luzerne County and on the KAZ passports, their website, and press releases.

### Other STATEWIDE EVENTS We JOINED or ORGANIZED:

- Civilian Conservation Corps Festival at Promised Land State Park
- The Elk Watch in Sinnemahoning State Park
- Pittsburgh's Venture Outdoors Festival
- The PA Parks and Recreation Society's annual meeting
- Eastern Mountain Sports Lancaster store spring and fall Club Days
- The dedication of the new Laurel Highlands Hiking Trail bridge over the Pennsylvania Turnpike
- National Trails Day (trail maintenance at Rose Trail)
- Numerous Earth Day and National Night Out events

PPFF invited guests to visit the new Wildlife Center at Sinnemahoning State Park for a private, behind-the-scenes look at the elk throughout the PA Wilds.



Park Manager Mike Mumau at the Laurel Highlands Highlands Hiking Trail bridge dedication.



# More Fun in the NEIGHBORHOOD

CONTINUED

## EDUCATIONAL

### At EDUCATIONAL EVENTS:

- Visiting schools to promote careers in volunteerism and conservation
- Presenting to students in the Geography-Earth Science Department of Shippensburg University
- Exhibiting at the Capital Region Internship/Co-op Fair
- Providing feedback to future conservation leaders at a Resume Boot Camp, Shippensburg University
- Partnering with the Harrisburg Keystone Rotary to host an evening camp at Pinchot State Park for the Nativity School of Harrisburg. This three-hour program included four stations – disc golf, outdoor cooking, lashing, and nature studies. The middle school boys rotated through each station and had a chance to try their hand at the various events.
- Presenting to the Lebanon Valley Hiking Club; at the Pennsylvania Association for Environmental Educators annual conference, and at Penn State-Fayette
- Participation in the Pennsylvania Heritage Society's Holiday Marketplace

*The Foundation works to protect the Keystone Fund, which provides funding for projects such as preservation of the historic buildings at Greenwood Furnace State Park.*



*PPFF partnered with Harrisburg Keystone Rotary for a three hour outing with PA youth.*



Photo credit: Alicia Duke

### And actively defending efforts to keep conservation alive:

- Continued the protection of the Keystone Fund as a line item in the state budget
- Presented to Conservation and Natural Resources Advisory Council
- Co-sponsored a legislative cocktail reception with the PA Recreation and Parks Society to meet with elected officials and promote the importance of the Keystone Recreation and Park fund
- Partnered with Recreation Equipment Incorporated, Forbes State Forest, and Laurel Hill State Park for a National Trails Day work day

*Assisting volunteers on the Rose Trail at Goat Hill Wild Plant Preserve for National Trails Day.*



*PPFF donors and their families were invited to a private elk tour at Sinnamahoning State Park. Here members of the group demonstrate the size of an elk.*

## IN THE NEWS

### In the NEWS:

Foundation goings-on popped up in media reporting statewide last year – at least 40 times, at last count. For a complete listing of headlines about the many ways we kept our mission front and center, visit our website at: [www.PaParksandForests.org/press.html](http://www.PaParksandForests.org/press.html).

*PPFF President Marci Mowery joins members of the Cumberland Valley Appalachian Trail Club performing maintenance on Pole Steeple Trail in Michaux State Forest.*



The Pennsylvania Parks and Forests Foundation is a proud member of the Growing Greener Coalition and a participating partner in iConservePA.

*The Foundation has an active intern program. In 2012, intern Gus Frederick assisted with our plans to identify the need for playgrounds in state parks as well as performed outreach.*



“You’re off to Great Places! Today is your day! Your mountain is waiting, So...get on your way!”  
 ~ Dr. Seuss,  
*Oh, the Places You’ll Go!*

# Play “at WORK!”

## Making Play ACCESSIBLE

Our projects, events, and plans involve groups of good-hearted people sharing labors of love. Here are some of the people, places, and events that showcase our commitment to *Living Playfully*.

### PLAYGROUNDS

In July 2012, the Foundation unveiled a new playground at Samuel Lewis State Park, in memory of Leah Vogel. The Foundation, family, and friends worked to raise funds for the playground in hopes that Leah’s love of the outdoors may be passed on to other children.

The Samuel Lewis State Park play area is the first fruit of the Leah Vogel Memorial Playground Fund, a larger effort on behalf of the Foundation to build playgrounds in state parks across the Commonwealth. The playground includes equipment designed to facilitate play for children with limited mobility. Instead of a typical merry-go-round, the park offers an Omni Spinner designed for easy entrance from a wheelchair or walker. Other playground highlights include a wave slide, fire pole, and ladder.

Many businesses and individuals helped to sponsor the Samuel Lewis Playground through personal donations and events, such as a 5K race, silent auction, bike wash, golf tournament, and sale of wrist bands. The Lancaster County Solid Waste Management authority, Mr. and Mrs. Louis Appell Jr., County Line Quarry, and a grant from the York County Community Foundation provided additional support for the project.

“Playgrounds are not just for playing, but for exploring, growing and making memories.”

~ Dan,  
 Bureau of Forestry

The building of the new playground at Samuel Lewis State Park in memory of Leah Vogel.



## MATCHING GRANTS at Work

Matching grants provided by DCNR Community Conservation Program.

**AMERICORPS – Our Young Conservationists at Work (and Play!)**  
 With a grant from the Community Conservation and Partnership Program, PPF reached out to Keystone SMILES AmeriCorps for partnerships in two parks, Cook Forest and Moraine. The AmeriCorps volunteers promoted volunteerism, built the volunteer database, and fostered relationships with local organizations.

Quick stats: The AmeriCorps members provided five outreach programs-including presentations to a local senior center, with local scout groups and at Clarion University. They recruited 61 volunteers for more than 280 volunteer hours. This included one work day with college students at Cook Forest where the volunteers removed invasive species; several work days with school groups and scout groups at Moraine State Park, and two AmeriCorps work days. Through a partnership with PPF and Moraine State Park, a soup and work day was developed to clean up the lakeshore at Moraine State Park.

Our AmeriCorps volunteer Brittanie helped coordinate a new partnership program with the Butler Veterans Administration Hospital and Muddy Creek Fishing Guides to provide fishing opportunities for disabled veterans. Park staff and Muddy Creek Outfitters led guided pontoon fishing programs once in August and once in September for 2 hours each visit. The program will continue in 2013. Muddy Creek Fishing Guides donate their time and equipment.



Above: 2012 AmeriCorps volunteer Brittanie Smith

Left: 2012 AmeriCorps volunteer Alyssa McGinniss recruited volunteers for the annual Cook Forest French & Indian War Encampment. Pictured (l to r) are Laura Isacco, Kiyomi Know, and Melia White



Evan Mongeau received a PPF matching grant to build benches at two state parks as part of his Eagle Project.



The Friends of Nockamixon State Park received a matching grant to construct two small boat/kayak racks and a mast hoist at Nockamixon Marina.



Through a grant from Recreation Equipment Incorporated and funds from PPF, the Friends of Shawnee have started the construction of a new handicapped accessible amphitheater at Shawnee State Park (unfinished project.)



New playground equipment was erected in the Quaker Race Day Use Area. The project was made possible by the Friends of Pinchot State Park, leftover funds from the former Pinchot Interest Group, a grant from ArcelorMittal - Steelton Plant, a grant from PPF, and funds from two memorial gifts.

**LACE UP for Leah**  
 PENNSYLVANIA Parks & Forests FOUNDATION  
 SEPTEMBER 16, 2012  
 Samuel Lewis State Park



The second Lace Up For Leah fun run occurred at Samuel Lewis State Park to raise funds for playgrounds in state parks and forests. While the racers ran in two directions (oops), the staff ran to catch up. It was running for all!

# Playing

## With FRIENDS

*No one plays nicer than PPF's Friends Groups.* Because they care and they can, these dedicated volunteers make our parks and forests better to use and visit. In 2012, we added Friends of White Clay Creek preserve to our friends network – so we welcome them to the group.

This brief list of numbers translates into hundreds of astounding stories. Small groups of dedicated conservationists - our Volunteer Friends Groups - move mountains. In 2012, Friends Groups in PA accomplished:

- 407 service projects
- 130 special events
- Raised \$245,805 to fund targeted needs
- 2,815 Volunteers donated 43,586 hours of their time
- The value of these donated hours is \$942,854

Clearly, these tireless volunteers believe that the whole is greater than the sum of the parts! We congratulate their success and admire the dedication and tenacity they bring to their goals.

### TRAINING FRIENDS

In 2012, in addition to eastern western Pennsylvania friends retreats, we also hosted trainings with individual friends groups. Staff made visits to all chapters and assisted with issues as diverse as event insurance to music industry questions. We provided monthly tidbits of learning through our online newsletter.



**BIG POCONO** Eagle Scout Nathan Wise designed a "vista wheel" for park visitors



**BLACK MOSHANNON** 2012 was the Friends' 27th annual Summer Fest.



**CHERRY SPRINGS** Cherry Springs' annual star parties bring seasoned astronomers to the park.



**COLONEL DENNING**  
The Friends of Colonel Denning offered a series of outdoor concerts



**KINGS GAP** Colebrook Road concert – Nothing says summer like Music on the Mountain



**LAUREL HILL** Keystone Trails Association's Code Orange trail care crew worked on Hemlock Trail



**LYMAN RUN** The Friends of Lyman Run salute Youth Fishing Derby winner Hunter Becks for his big fish



**MILTON** The Friends of Milton continue to expand hiking opportunities on the island



**NOCKAMIXON** The Friends of Nockamixon are adamant about building (and rebuilding) trails



**OHIOPYLE** Friends of OhioPyle know that gathering for a delicious meal is a great way to thank their volunteers



**PARKER DAM** October at Parker Dam means Fall Festival fun



**PINCHOT** Beautiful new benches line the lake at Gifford Pinchot thanks to the Friends

## FRIENDS CHAPTERS

- |   |  |
|---|--|
| Cherry Springs Dark Sky Association                           | Friends of OhioPyle State Park               |
| Friends of Big Pocono State Park                              | Friends of Oil Creek State Park              |
| Friends of Black Moshannon State Park                         | Friends of Parker Dam State Park             |
| Friends of Colonel Denning State Park                         | Friends of Pinchot State Park                |
| Friends of Delaware State Forest and Promised Land State Park | Friends of Pine Grove Furnace State Park     |
| Friends of Goddard State Park                                 | Friends of Prince Gallitzin State Park       |
| Friends of Greenwood Furnace                                  | Friends of Ridley Creek State Park           |
| Friends of Keystone State Park                                | Friends of Ryerson Station State Park        |
| Friends of Kings Gap Environmental Education Center           | Friends of Shawnee State Park                |
| Friends of Laurel Hill State Park                             | Friends of Shikellamy State Park             |
| Friends of Lyman Run State Park                               | Friends of the State Line Serpentine Barrens |
| Friends of Milton State Park                                  | Friends of Swatara State Park                |
| Friends of Mont Alto  | Friends of Varden Conservation Area          |
| Friends of Mt. Pisgah State Park                              | Friends of Weiser State Forest               |
| Friends of Nockamixon State Park                              | Friends of White Clay Creek Preserve         |
| Friends of Nolde Forest Environmental Education Center        | Friends of Yellow Creek State Park           |
|   | Laurel Mountain Volunteers                   |



**SHIKELLAMY** Everyone enjoys the Fall Harvest Festival with the Friends of Shikellamy



**SWATARA** The Friends of Swatara are hard at work building and improving trails



**WEISER** Multi-use trails are the specialty of the Friends of Weiser, where everybody gets along



**YELLOW CREEK**  
Puddle duck boats? Hang out with the Friends of Yellow Creek and learn to build 'em and sail 'em



**PRINCE GALLITZIN** Kids, bikes and the Friends of Prince Gallitzin were a winning combination with the dedication of a new playground



**RYERSON STATION** Hunting and other outdoor pursuits are saluted annually at Outdoor Heritage Day

# Playing

## With FRIENDS

"Unless someone like you cares a whole awful lot, Nothing is going to get better. It's not."  
~ Dr. Seuss, *The Lorax*



# WINNING is Fun!

Congratulations

## 2012 AWARDS BANQUET

Congratulations to all of the award winners at our sixth annual Awards Banquet held at the Country Club of Harrisburg on May 1, 2012.

“There is fun to be done!  
There are games to be won.  
And the magical things you can do with that ball, will make you the winning-est winner of all.”  
~ Dr. Seuss,  
*Oh, the Places You'll Go!*

**JOSEPH IBBERSON GOVERNMENT AWARD,** sponsored by Chesapeake Energy: **Dr. James Grace**  
(Left to right: Barbara Sexton, Chesapeake Energy; Dr. James Grace; PPF President Marci Mowery)

**FOREST OF THE YEAR AWARD,** sponsored by Dominion: **Elk State Forest**  
(Left to right: John Frith, Dominion; Jeanne Wambaugh, District Forester, Elk State Forest; PPF President Marci Mowery)

**VOLUNTEERISM AWARD,** sponsored by Recreation Equipment Inc. (REI): **Mid-Atlantic Karst Conservancy**  
(Left to right: Chris Joyce, REI-Bedford; Kerry Speelman, MAKC; Andrew Rentzel, MAKC; PPF President Marci Mowery; MAKC's Tom Metzgar, Kim Metzgar, Aron Schmid and Katherine Schmid)



**CLIFF JONES KEYSTONE LEGACY AWARD,** sponsored by Woolrich, Inc.: **Franklin L. Kury**  
(Left to right: The Honorable Franklin L. Kury, PPF President Marci Mowery)



**PARK OF THE YEAR AWARD,** sponsored by Talisman Energy: **Kinzua Bridge State Park**  
(Left to right: PPF President Marci Mowery; Jason Heasley, Kinzua Bridge State Park Manager; Lisa Walker, Kinzua Bridge State Park; Amy Gilbert, Talisman Energy; Jim Reinsburro, Kinzua Bridge State Park)



**PRESIDENT'S AWARD,** sponsored by the Greater Philadelphia Chamber of Commerce: **Yellow Creek State Park**  
(Left to right: Denise Sickon, Yellow Creek State Park; Kenneth Bisbee, Yellow Creek State Park Manager; PPF President Marci Mowery)



**EDUCATION AWARD:** **Bud and Gwen Wills**  
(Left to right: PPF President Marci Mowery, Gwen Wills, Bud Wills)



**IMPROVEMENT AWARD:** **Friends of State Line Serpentine Barrens**  
(Left to right: Mike Bertram, Henry Whitesel, PPF President Marci Mowery, Jim Dudley and Emery Abdel-Latif of the Friends of the State Line Serpentine Barrens)



**YOUNG VOLUNTEER AWARD,** sponsored by PPL Electric Utilities: **Paul Mickle**  
(Left to right: Paul Mickle, PPF President Marci Mowery)



Congratulations

### Critics' Choice BEST in SHOW



Larry Laird - Whipple Dam State Park  
(A gorgeous fall scene reflected on the water.)

### More WINNING is FUN!

Many beautiful photos were entered into the Foundation's Summer 2012 Take Five in the Outdoors Photo Contest. The contest winners were chosen by popular vote on the Foundation's Facebook page and by Critics' Choice.

### People's Choice BEST in SHOW



Tom Dorsey - Oil Creek State Park  
(A fawn peeks from beneath her mother.)

In every newsletter, eBlast, or blog, you may read about where we came from:

...landmark conservation work through the WPA's Civilians Conservation Corps, fascinating histories of our state parks and forests, and the experiences of our friends and volunteers

...and where we are going:

...strengthening our commitment to a living legacy by offering opportunities such as Memorial or Honorary Gifts. You can honor the memory of a special person or joyous occasion while supporting our work in conservation, recreation, education, and volunteerism in our state parks and forests.

We encourage our members, partners and friends to continue the legacy of conservation of our state parks and forests for future generations through a bequest or life income as well.

# YOU make it Fun!

## From the Staff of the FOUNDATION

Dale Carnegie once said, "People rarely succeed unless they have fun at what they are doing." Or to put it in the words of ice cream superstars (and widely-acknowledged Gurus of Fun) Ben and Jerry, "If it ain't fun, why do it?"

During our *Year of Living Playfully*, we reaffirmed our belief that play serves many valuable purposes, such as developing emotional, social, moral, physical and intellectual capacities. It builds friendships, promotes problem solving, and increases creativity. That's why we spend so much time encouraging you to put as much joy and light-heartedness into each of your days that you can.

The staff and board of the Foundation approach the mission and vision of our organization with a playful attitude, knowing that the more fun we have, the more likely we are to achieve our goals and develop creative ideas to tackle the challenges ahead of us. It's a guiding principle for us - we take our work very seriously, but ourselves? Not so much.

Who we DO take seriously, is you—our members, volunteers, and donors. Your support—via monetary donation or time—not only motivates us on difficult days, it is a critical part of the successes you read about in the pages of this annual report. A complete list of donors is not included in our annual report to insure the privacy of our supporters. We do genuinely and enthusiastically appreciate each contribution and hope you see your good works reflected on every page.

Thank you.



Marci and her family in 1973 at Elk State Forest. (Left to right: Pap Pool, Teen, sister Diane, Dad, Marci, Mom)



Pam Metzger at Ohiopyle State Park back in 1963.



Lisa Salvatore and her daughter Marina preparing for a picnic lunch at Pinchot State Park.



Jen Rehill has been enjoying kayaking in Pennsylvania state parks for years.

"A person's a person, no matter how small."

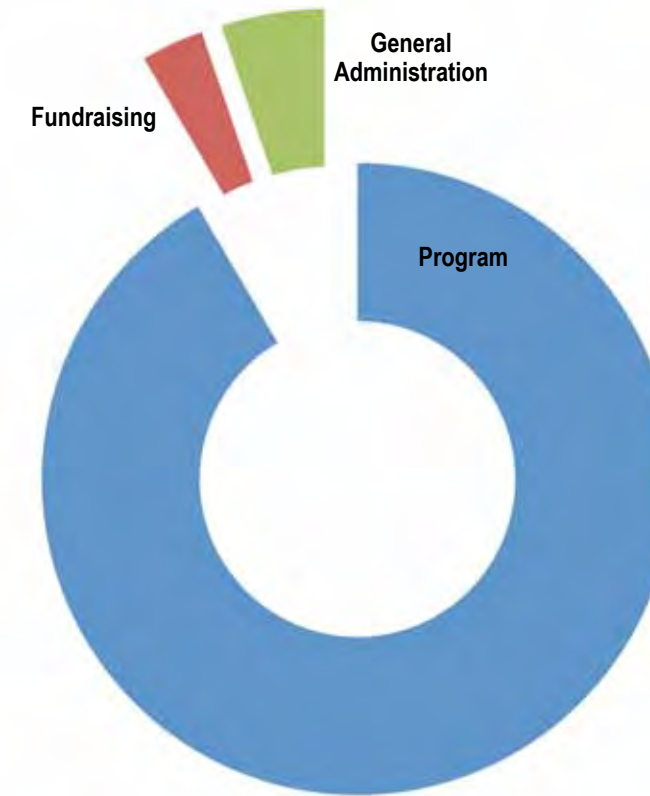
~ Dr. Seuss, *Horton Hears a Who*

"Never underestimate the value of every contribution - no matter how small!"  
~ Staff of PPF

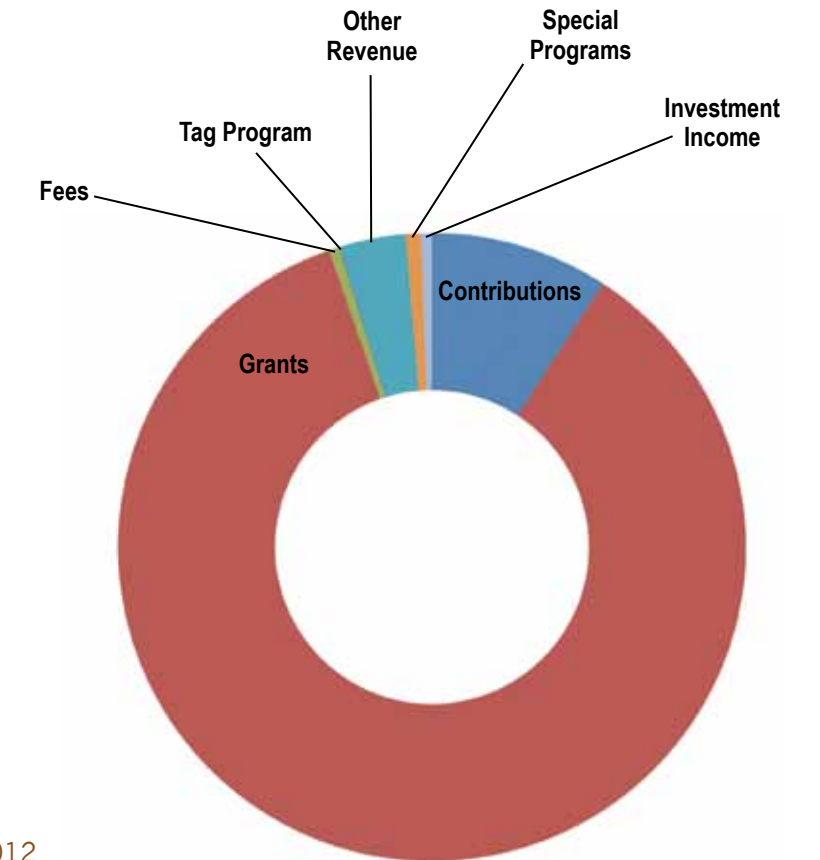
# FINANCIAL Overview

As of December 31st, 2012, our total assets and liabilities, which includes funds from the 149 accounts managed by the Foundation, were \$1,090,492.00.

## 2012 Total Expenses



## 2012 Total Income



The allocations shown in the pie charts represent the Pennsylvania Parks and Forests Foundation's operating budget and do not include revenue raised by friends groups and individual accounts (see page 14 for friends revenue).

The complete audited financial statement for the year ending December 31st, 2012 is available by contacting the Foundation.

Thank you to the Department of Conservation and Natural Resources Community Conservation Partnerships Program.

## BOARD OF DIRECTORS:

### Chair

Rob Wonderling  
*Greater Philadelphia Chamber of Commerce*

### Vice Chairman

William Forrey  
*Retired, Bureau of State Parks*

### Secretary

Brian J. Clark  
*Buchanan, Ingersoll & Rooney*

### Treasurer

Gary Smith  
*Retired, DCNR*

### Directors

David Argall, *Pa Senate, 29th District*  
George Asimos, *Saul Ewing LLP*  
Darla Cravotta, *Allegheny County Executive Office*  
Jim Fields, *SAP America*  
Maxine Harrison, *Friends Representative*  
Mark Longietti, *Pa House, 7th District*  
Andrew Mowen, *Penn State University*  
Joanne Raphael, *PPL Corporation*  
Barb Sexton, *Chesapeake Energy*

### Honorary Members

Linda McKenna Boxx  
John C. Oliver III

### Advisory Board

Hank Barnette

## STAFF:

### President

Marci Mowery

### Bookkeeper

Lisa Salvatore

### Membership/Volunteer Coordinator

Pam Metzger

### Public Relations/Outreach Coordinator

Jen Rehill

1845 Market Street, Suite 202  
Camp Hill, PA 17011  
(717) 236-7644  
[www.PaParksAndForests.org](http://www.PaParksAndForests.org)

