

Penn's Stewards

News from the Pennsylvania Parks & Forests Foundation



Spring 2019



Joe Ibberson,
one of the founding
signers for PPFF, presents the 2007
Government Award to Secretary DiBerardinis.

IN THIS ISSUE

- PG: 1** PPFF: A Look Back at 20 Years of Inspiring Stewardship
- PG: 2** President's Message
PPFF 20th Anniversary Trivia
- PG: 3-5** A Look Back at 20 Years *continued*
- PG: 5** Needs Press Event
Wilderness Wheels in Action
- PG: 6** PPFF's Chapter Growth
First Day Hikes
- PG: 7** PPFF's Chapter Growth
Michaux By the Numbers
- PG: 8** Skill Builder
Spotlight on Needs List
- PG: 9** Calendar of Events
PPFF Annual Awards Banquet
- PG: 10** PPFF Friends Groups
Your Friends in Action
- PG: 11** More Friends in Action
YOU Made it Happen
- PG: 12-13** 2018 Photo Contest Results
- PG: 14** Penn's Woods Documentary
Passport Couple
- PG: 15** New Leadership Team
Penn's Woods Need Your Help!
- PG: 16** EITC Program

CONTACT US:

Pennsylvania Parks & Forests Foundation
1845 Market Street, Suite 202, Camp Hill, PA 17011
(717) 236-7644 www.PaParksAndForests.org

Est. 1999

A Look Back at 20 Years of Inspiring Stewardship

You've been there, right? You do your job, raise your family, serve your community, have a little fun. The calendar pages turn over and the next thing you know 20 years have gone by. That is just what has happened at the Foundation. We woke up one morning and 20 years of Foundation history had gone by.



PPFF's
original
logo from
1999.

It was October 1999 when a group of visionary leaders came together with the idea to create an organization dedicated to our state parks and forests. These leaders knew that, with the assistance of Pennsylvanians who have a deep and abiding connection to those public lands, the parks and forests could survive into the 21st century and beyond.

So they signed the Articles of Incorporation to create the Friends of Pennsylvania's Parks and Forests (our Ps and Fs were in a different order then) and we—you, Friends groups, and the Foundation—started a journey together, creating opportunities, conserving our natural world, and building a volunteer base.

In a flash, 20 years of logging thousands of volunteer hours, raising millions of dollars, and promoting countless events—in order to make our parks and forests even better—had passed.

Just look what you've done!

continued on page 3



2018 Photo Contest Winner
Humor, Critics' Choice: Steven Sybert, Pymatuning State Park

Board of Directors:

Chairwoman

Bradley L. Mallory
Retired, PennDOT, Michael Baker Jr. Inc.

Vice Chairwoman

Christine (Tina) Molski
REI

Treasurer

Dr. James Grace
Retired, DCNR

Secretary

Mary Soderberg
Friends of Pine Grove Furnace State Park

Directors

Nancy Ball
Retired, Lafayette College

Brian J. Clark
Buchanan, Ingersoll & Rooney

George Fernandez
Latino Connection

Gus Frederick
FEMA

Brian Kavalukas
Direct Energy

Rep. Mark Longietti
PA House of Representatives

Maria Montero
Pennsylvania Convention Center Authority

Advisory Board

George Asimos
William C. Forrey
Rob Wonderling
Gary Smith

Staff:

Marci Mowery, *President*
Debbie Whitmoyer, *Bookkeeper*
Pam Metzger, *Membership/Volunteer Coordinator*
Amanda Trimmer, *Outreach & Public Relations Coordinator*
Beth Artz, *Office Assistant*

President's Message

Marci Mowery



Thank you for helping to celebrate the 125-year anniversary of Pennsylvania's state park and forest system in 2018! Let's continue to celebrate each and every day that we are gifted with access to such amazing places. Mark your calendars for May 23-30 when we'll again celebrate Pennsylvania Park and Forest Week!

To keep the celebrations rolling, in 2019 the Foundation celebrates our 20th anniversary! This issue of Penn's Stewards honors our past with a look back at PPFF's formation and growth, while the summer issue will celebrate the present with a spotlight on accomplishments and the fall issue will set the course for the future. One thing is certain, we could not have done it without YOU, our volunteers, donors, and members. Your enthusiasm and commitment to our parks and forests knows no limits!

In addition to the celebrations we hope to host throughout the year, we'll also be exploring and sharing the challenges faced by our parks

"Thank you for helping to celebrate the 125-year anniversary of Pennsylvania's state park and forest system in 2018!"

and forests. As you will see on page 5, the Infrastructure Report was unveiled, calling for increased investment in our public lands. We'll be touring the state showcasing these challenges and inviting you, our enthusiastic supporters, to join us. It will take all of us working together to educate and motivate for action on this issue.

Keep your eyes on our website—www.PaParksAndForests.org—for ways to get involved NOW, as well as how to be a visionary leader for the FUTURE.

*Yours in the Outdoors,
Marci*

PPFF 20th Anniversary Trivia (and Giveaway!)

We are SO excited to celebrate our 20th anniversary with you ALL year with fun activities! And what better way to kick things off than with some giveaways! Each Penn's Stewards newsletter this year will have five trivia questions to answer. For each trivia question you answer correctly, your name will be put into a drawing to win some of the awesome PPFF merchandise we have accumulated over the years.

Keep in mind, the answers to the trivia questions could be in the newsletter, on our website or even our Facebook page, so be prepared to explore a bit—something we love doing at PPFF! Send your answers from the spring newsletter to newsletter@PaParksAndForests.org by May 1.

Trivia #1:
What is the first issue of the Penn's Stewards newsletter available online?

Plan Ahead

Continue the legacy of conservation of our state parks and forests for future generations through a bequest or life income gift to PPFF.



Did You Know?

PPFF is able to accept your TAX DEDUCTIBLE donations of stock to support our work and/or projects in state parks and forests.

For more information visit www.PaParksAndForests.org

A Look Back at 20 Years of Inspiring Stewardship continued from front cover

“The people have a right to clean air, pure water, and to the preservation of the natural, scenic, historic and esthetic values of the environment. Pennsylvania’s public natural resources are the common property of all the people, including generations yet to come. As a trustee of these resources, the Commonwealth shall conserve and maintain them for the benefit of all people.”

– Pennsylvania Constitution, Article I, Section 27

In the Beginning, a Vision

In the late 1980s, then Department of Environmental Resources Secretary Arthur Davis charged the Department with a massive undertaking: a comprehensive planning process envisioning a 21st century state parks system. Through public meetings, 120,000 questionnaires, and a year of research by staff, this “State Parks 2000” report called for improvements in state park operation, maintenance, education, and funding, and expressed strong support for the creation of a foundation to help raise funds and create an army of volunteers for the improvement of the “natural, outdoor recreation” that most respondents to the surveys wished to maintain.

At last, in 1999 the founding board established the Friends of Pennsylvania’s Parks and Forests (we became the Pennsylvania Parks and Forests Foundation in 2001) to give users and supporters of Pennsylvania’s state parks and forests a positive way to contribute to the conservation of our publicly owned lands. Those first goals were to work in partnership with state parks and forests to establish a network of Friends groups to become the voice and stewards of our public lands; to create partnerships; to provide a tax-deductible vehicle for donations or bequeaths to Pennsylvania’s state parks and forests; and to engage people in outdoor recreation, education, and volunteerism.

Building Partnerships

As set out by “State Parks 2000,” volunteers are valuable partners in working shoulder to shoulder with hard-working park and forest staff. Volunteers not only invest in park and forest projects, they support the tourism economy in the



Photo Credit: Friends of Ridley Creek

In 2004, volunteers with the Friends of Ridley Creek State Park helped restore the historic gardens.

Commonwealth by coordinating special events, providing ongoing trail maintenance, helping with construction projects, working on conservation projects, enhancing education and interpretation, providing outreach to the community, creating awareness about the value of their park and forest, and fundraising to support all of these efforts. Corporate volunteer programs, service groups like scouts and 4-H clubs, high school and university environmental and outings programs, and specific user groups all have and do contribute valuable time, as well.

The founding board considered what might happen if a local group was empowered to direct their efforts specifically to an individual park or forest. By providing legal nonprofit status to these local groups and relieving them of the need to file tax returns and maintain auditable financial records, they would be able to devote their energy to the events and projects they wanted to do and the public wanted to sustain. What happened? Magic!

Twenty years later, visitors to parks and forests benefit from your support of public programs and training efforts coordinated now by 44 Friends groups working in 40 state parks and five state forests (see timeline on pages 6-7). From accessible recreation to programs on camp cooking and trail maintenance, when a need is identified, forces merge to find a solution.

continued on page 4



In 2009, leaders of Friends of OhioPyle spread the word about the work of the Friends group.

Photo Credit: Friends of OhioPyle

A Look Back at 20 Years of Inspiring Stewardship continued from page 3

"The progress of PPFF and the increase in the number of Friends groups in state parks is a great reward in itself. The time spent on PPFF projects and board meetings is time well spent."

– Bill Forrey, Founding Member, Cliff Jones Keystone Legacy Award Winner and PPFF Advisory Board Member

Raising Funds

Volunteers are crucial but, to be frank, so is money! Park and forest enthusiasts like you have come together over the last 20 years to enthusiastically support parks and forests through PPFF. Much like a community foundation, PPFF holds accounts for each of its Friends groups, as well as individual state parks and forests. Using sound fiscal policy, PPFF manages these funds to maximize benefits to our public lands.

A Living Gifts program offers meaningful gifts you have bought in the name of a family member, friend, or colleague, such as trees and shrubs planted in state parks and forests, the adoption for rehabilitation of a CCC structure, or funding an educational program.

Successful grants and private donations have supported a wide variety of projects in our parks and forests, often captured in the pages of our newsletter under the heading of "You Made it Happen." Projects have helped connect children to the outdoors, improve access to recreation, restore critical habitats, improve safety, and conserve our state lands.

The recent introduction of planned giving means that your dedication to the state parks and forests can keep providing your support to the public lands even when you are gone.



Photo Credit: Marc Mowery

To celebrate the importance of protecting our geologic assets, PPFF partnered with the Friends of Pine Grove and Shippensburg University in 2017 to host a Geology Day at Hammonds Rocks.

Educating, Engaging and Advocating

We love the fact that wherever we go, you're there! From the explosive growth of First Day Hikes to community events to rallying for clean water and helping Friends groups remove graffiti, your love of our state parks and forests is apparent.

Do you remember the Gold Medal Tour in 2010? You made us feel like rock stars when you joined us at press events in 29 parks to show off the well-deserved national Gold Medal Award presented to the PA State Parks by the American Academy for Park and Recreation Administration in partnership with the National Recreation and Park Association.



Photo Credit: Marc Mowery

The late Jim Nevins and Ray Werts of the Western Clinton Sportsmen's Association hosted the Gold Medal at Hyner View State Park in 2010.

Understanding that children today spend less time playing outside than in any previous generation, PPFF and its Friends groups help to connect children and their families to nature through special events, programs, play areas, and other activities offered in conjunction with state parks and forests.

In support of these efforts, in 2011 PPFF introduced the "Pennsylvania State Parks and State Forests Passport," including maps, a history of our park and forest system, information and a memorable feature about each park and forest, and a record-keeping system so you can track your visits. And when you eventually see them all—let us know!



Chloe Benfer was an early Passport reader.

Photo Credit: Gloria Benfer

To recognize the outstanding service, programs, and exemplary work being done at state parks and forests, the Foundation established an annual awards program in 2007. More than 100 individuals and groups have been honored for their work and contributions to our parks and forests including this year's Lucky 13th Class (see page 9). If you check out the awards, you'll see ones bearing the names of two of the three people who signed those long ago Articles of Incorporation, Cliff Jones Keystone Legacy Award and Joe Ibberson Government Award.



In 2007, members of the Civilian Conservation Corps were recognized for their contribution to the conservation of our state parks and forests.

We Owe Our Success to YOU!

"PPFF would not have lasted 20 minutes, let alone 20 YEARS, without the loyal support and dedication of our donors, members, and volunteers. You know the meaning of leaving the legacy of these lands for the enjoyment of future generations. How glad we are that you know that delighting in them today is important, too," says Marci Mowery, PPFF President.



Trivia #2:
How many state parks were there when PPFF started?

Press Event Discusses Park and Forest Needs



On January 28, PPFF Vice Chair Tina Molski of REI facilitated a press event to open the discussion on the maintenance and staffing needs in our state parks and forests. Joining the Foundation were Katie Hess from the South Mountain Partnership (pictured at podium), John Kline representing the Pennsylvania Federation of Sportsmen and Conservationists, Richard Lewis of the Pennsylvania Forestry Association, Andre Weltman of the Friends of Pine Grove Furnace State Park, PPFF Board Member Maria Montero and PPFF President Marci Mowery.

Wilderness Wheels in Action

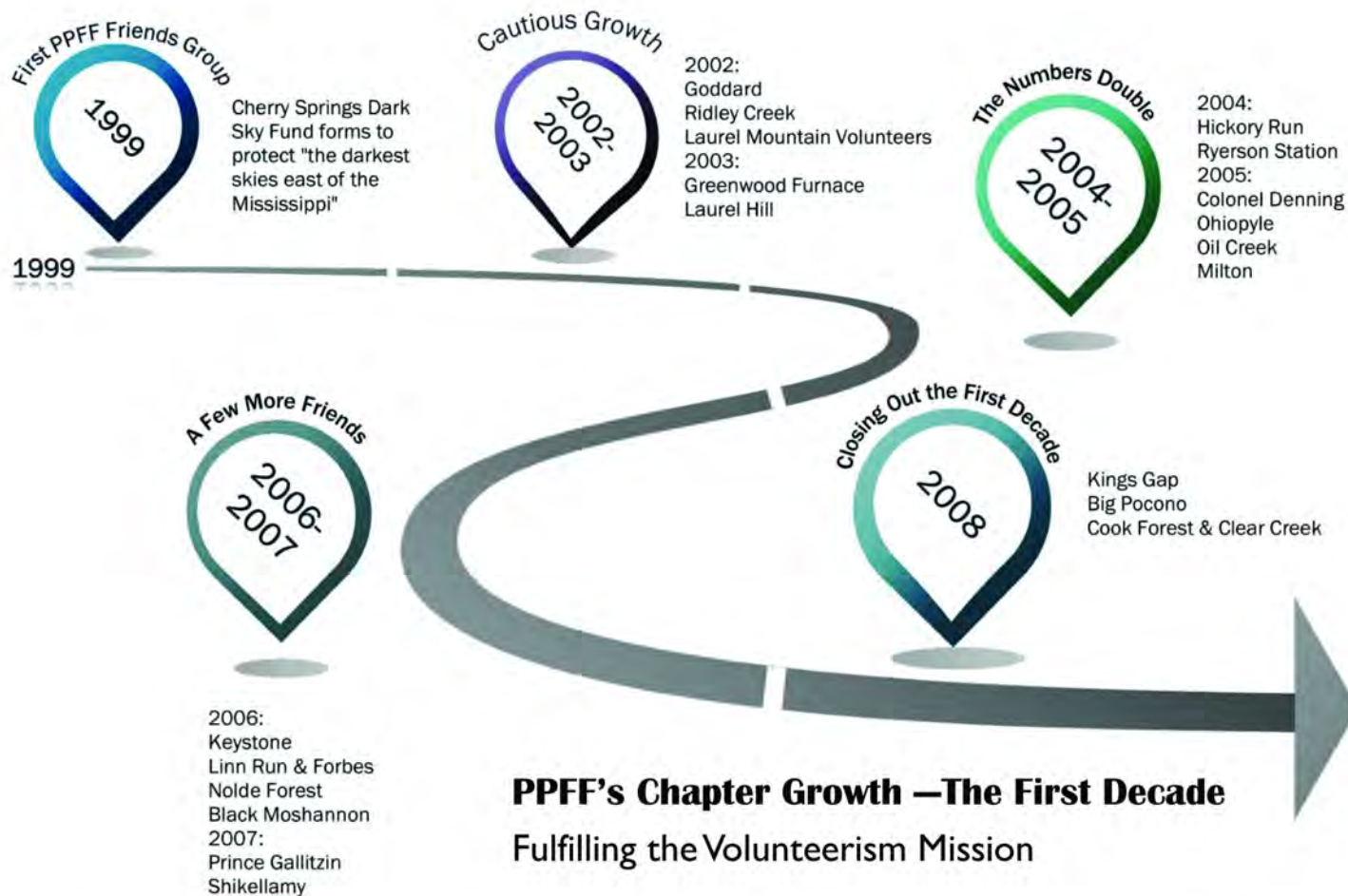


Twenty-seven students from

Harrisburg participated in a two-day camping/tenting program as part of the Harrisburg Inspiring Connections Outdoors program.

With transportation funding from the Pennsylvania Parks and Forests Foundation Wilderness Wheels Transportation Scholarship fund, the students engaged in orienteering, hiking, fire building, and cooking. Outdoor cooking and meal preparation was a favorite activity, empowering the young people to engage in new food choices.





We ended our first decade with 21 chapters, representing 21 state parks and one state forest.



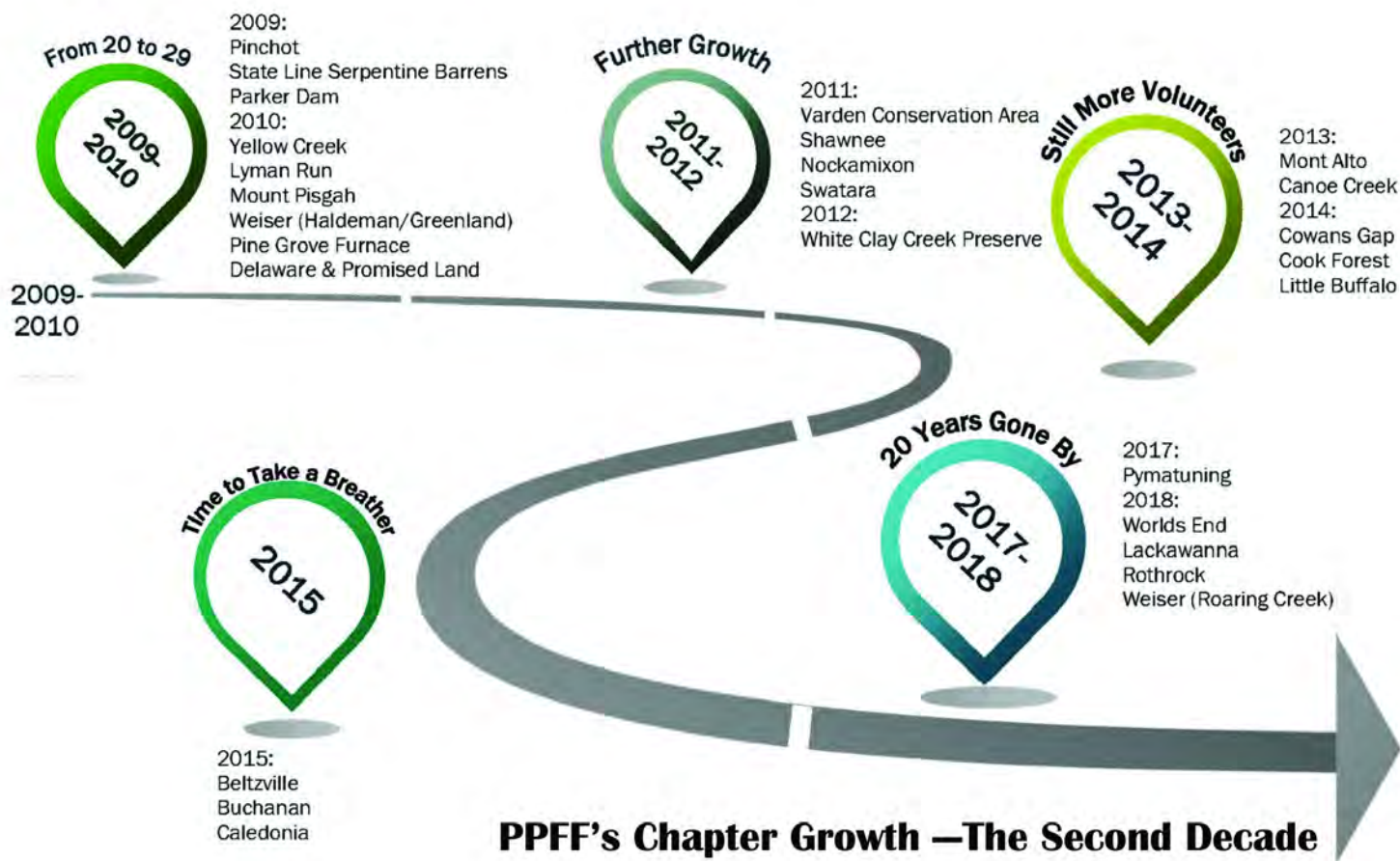
IN MEMORIAM



We learned in January of the November passing of Maureen McCleary of Lake Ariel, PA.

Maureen, along with her husband Tom, was one of the original board members of the Friends of Varden Conservation Area.

Active as a realtor in her community, Maureen loved adventuring with Tom and their dogs.



PPFF's Chapter Growth —The Second Decade

Fulfilling the Volunteerism Mission

Friends have come and gone but we ended our first 20 years with 44 chapters representing 40 state parks and five state forests (one with two different Friends groups).

THE FACTS SPEAK FOR THEMSELVES

Michaux State Forest would benefit from a Friends group.

In fact, 50 people braved the polar-vortex to attend a meeting exploring the launch of a new group at Michaux.

Interested? Check our calendar for the next meeting date and time.

Michaux by the Numbers

- Potential daily forest visitation population (within 45 miles) is 1.6 million
- Potential regional forest visitation population (within 100 miles) is 12 million
- 330,000+ recreational visits annually
- 70.6% of visitors utilize the forest for recreational purposes
- 210 miles of designated shared use trails
- 41 miles of ATV trails
- 36 miles of Appalachian National Scenic Trail
- 82 miles of snowmobile trails
- Michaux State Forest has the highest trail density of any PA state forest
- Michaux State Forest receives more requests for special events, most of which utilize recreational trails, than any other forest in the state



EXTRAGIVE 2018



\$7,050 RAISED FOR YOUR STATE PARKS AND FORESTS

SKILL BUILDER

How to Choose a Headlamp

Tips from the Experts at REI

Headlamps are one of the most useful pieces of gear to own because they offer a hands-free way to navigate in the darkness. Whether you plan to run or hike at night, set up camp in the dark, or walk your dog after dusk, these tips will help you choose a headlamp that's right for you!



Light Output

Most headlamps use LEDs as a light source, which are rugged, energy-efficient and long-lasting. You also want to look at the lumens—a unit of measure that gauges the total quantity of light emitted.

Beam Type

A flood beam is useful for general camp tasks, up-close repair work, and reading. A spot beam enables long-distance viewing, a good choice to navigate a trail in the dark. An adjustable headlamp that offers both beams is the most versatile.

Beam Distance

A headlamp's fundamental purpose is to channel light to a target area. While lumens tell you how brightly a headlamp glows (at its source), headlamp beam distance tells you how far it goes (to a surface you want illuminated).

Weight

You won't notice substantial differences in headlamp size and weight until you start examining some very high-powered models. Some have top straps and external battery packs that add bulk. Such models are intended for specific needs such as climbing rather than routine adventures.

Headlamp Brightness Levels and Modes

Most headlamps offer at least a high and low mode. Others may offer three or more modes. Strobe mode acts as an emergency blinker. Boost (or Zoom) permits an extra-intense beam to be projected for a brief period. Many headlamps offer a red-light mode. Red light does not cause our pupils to shrink the way white light can and helps protect the night sky, which comes in handy when stargazing.

Additional Headlamp Features to Consider

Water resistance

Make sure your headlamp can withstand some degree of exposure to rain and snow, as well as modest drops and jolts.

Tilt

The ability to adjust the headlamp unit up and down is a nice option. It lets you position the beam exactly where you want it.

On/off switches

If possible, try out the buttons to see if you like how the headlamp cycles through its modes.

Source: www.rei.com/learn/expert-advice/headlamp.html

Spotlight on Needs List

There are many ways in which you can support your state parks and forests, one of which is to help accomplish projects on the Needs List. Each newsletter will feature a few projects. The entire list can be found at www.PaParksAndForests.org/support/parks-forests-needs-list.

Funding for stain applied by volunteers would go a long way to improving the historic group camps at **French Creek State Park**. There are approximately 50 cabins just like this and 14 larger group camp structures that need stain. The overnight



Photo Credit: Brent Erb

cabins alone will require 150 gallons (and a lot of labor) to complete.

Improve the camping experience in **Bald Eagle State Forest** through the acquisition of fire rings and lantern holders. Fund one or make a donation to the cause.

Creating a trail to guide visitors to the bottom of the falls at **McConnells Mill State Park** would improve visitor safety.



Photo Credit: Charles Kozora

Sproul State Forest would like to plant 50 trees with woven wire protection at the Fish Dam Vista, Two Rock Run Vista, and the Hirth-Babka Memorial sign. The trees, which don't achieve great height, will add to the beauty but not impact the view.

If you'd like to donate to one of these spotlighted projects, visit <http://bit.ly/PPFFNeedsListSpotlight>

UPCOMING CALENDAR OF EVENTS

www.PaParksAndForests.org/events

MARCH

- 3/2 Friends of Ohiopyle: Trail Stewardship Day (first Saturday every month)
- 3/2 Friends of Ridley Creek: Trail Stewardship Day (first Saturday every month)
- 3/3 Friends of Canoe Creek: Mountain Pie Madness
- 3/7 Friends of Beltzville: Weekly Walking Group (every Thursday)
- 3/16 PPFF Chapters - Southern Retreat
- 3/23 Friends of Lyman Run: Winter Adventure Hike

APRIL

- 4/7 Friends of Cowans Gap: 5th Annual 5k
- 4/13 Friends of Buchanan: Adopt-a-Highway
- 4/13 PPFF Chapters - Northern Retreat
- 4/20 Friends of Prince Gallitzin: Easter Egg Hunt
- 4/20-4/27 J.T. Rothrock Memorial Conservation Week
- 4/22 EARTH DAY: GIVE A LITTLE BACK
- 4/27 Friends of Greenwood Furnace: Spring Clean-Up at Whipple Dam
- 4/27 Friends of Pine Grove Furnace: Earth Day



MAY

- 5/8 PPFF Annual Awards Banquet
- 5/11 Friends of Greenwood Furnace: Spring Clean-Up at Penn Roosevelt
- 5/12 Friends of Lyman Run: Mother's Day Brunch & Hike
- 5/23-5/30 PARKS & FORESTS WEEK: The Quasquicentennial Plus 1
- 5/25 Friends of Greenwood Furnace: Music on the (Whipple Dam) Beach

JUNE

- 6/1 NATIONAL TRAILS DAY: Celebrate Your Favorite Trail
- 6/8 GET OUTDOORS DAY
- 6/8 Friends of Pine Grove Furnace: Iron Run Half Marathon/Charcoal Challenge 5k
- 6/15 Friends of Black Moshannon: PA Wilds Child
- 6/15 Friends of Greenwood Furnace: Music on the (Whipple Dam)
- 6/16 Friends of Lyman Run: Father's Day Breakfast and Kayak Tour
- 6/22- 6/23 Friends of Goddard: Pioneer Frolic
- 6/22 Friends of Rothrock: Volunteer Training and Work Day

SAVE THE DATE!

PPFF's Annual Awards Banquet

Join us in celebrating the leadership and service of our state parks and forests!

Date: May 8, 2019

Location: The Susquehanna Club at the DLA Defense Distribution Center, New Cumberland

Time: 5 p.m. cash bar, 6:30 p.m. dinner

Program: Cash bar, dinner buffet and dessert selections followed by awards program

Cost: \$50 (registration deadline is April 29, 2019)

To register visit: <http://bit.ly/PPFFBanquet2019>

Join your friends and fellow conservationists to celebrate the accomplishments of this year's winners:

Cliff Jones Keystone Legacy Award: Larry Williamson

Government Award: Dan Devlin

President's Award, National Effort: REI

President's Award, Pennsylvania: United by Blue

Park of the Year: Laurel Hill State Park

Forest of the Year: Bald Eagle State Forest

Improvement Award (Group): Clarion County North Country Trail Association

Improvement Award (Individuals): Ron and Donna Hirt, Parker Dam State Park

Volunteer of the Year: Don Litten, Black Moshannon State Park

Education Award: Friends of Washington Crossing

Table sponsors, award sponsors, silent auction donations, and paid well wishes are all welcome.

To learn more, contact Beth Artz at bartz@paparksandforests.org



Trivia #3:
Who was the first Cliff Jones Award winner?

Spring is In the Air!

Two PERFECT opportunities to celebrate spring while exploring a PA state park or forest!



Photo Credit: David Whiteman

April 20-27
Dr. J.T. Rothrock Memorial Conservation Week

May 23-30
Pennsylvania State Park and Forest Week

PPFF FRIENDS GROUPS

Cherry Springs Dark Sky Association

Friends of Beltzville

Friends of Big Pocono

Friends of Black Moshannon

Friends of Buchanan

Friends of Caledonia

Friends of Canoe Creek

Friends of Colonel Denning

Friends of Cook Forest

Friends of Cowans Gap

Friends of Goddard

Friends of Greenwood Furnace

Friends of Keystone

Friends of Kings Gap

Friends of Laurel Hill

Friends of Little Buffalo

Friends of Lyman Run

Friends of Milton

Friends of Mont Alto

Friends of Mt. Pisgah

Friends of Nockamixon

Friends of Nolde Forest

Friends of Ohiopyle

Friends of Oil Creek

Friends of Parker Dam

Friends of Pinchot

Friends of Pine Grove Furnace

Friends of Prince Gallitzin

Friends of Pymatuning

Friends of Ridley Creek

Friends of Rothrock

Friends of Ryerson Station

Friends of Shawnee

Friends of Shikellamy

Friends of State Line Serpentine Barrens

Friends of Varden Conservation Area

Friends of Weiser-Haldeman/Greenland Tracts

Friends of Weiser-Roaring Creek Tract

Friends of White Clay Creek

Friends of Worlds End

Friends of Yellow Creek

Lackawana State Park Trail Care Crew

Laurel Mountain Volunteers

Your Friends In Action: *Friends of Buchanan State Forest*

Named in honor of James Buchanan, Buchanan State Forest in Fulton County consists of 71,600 acres of forest land. For visitors, this is a region of historic interest and scenic beauty offering hunting and fishing and trails for hiking, snowmobiling, mountain biking, cross-country skiing, ATVing, and horseback riding.

The Friends of Buchanan State Forest formed in the fall of 2015 with an eye to improving the trails in the Martin Hill and Sideling Hill tracts of the forest. One of the first orders of business was to sit down with the forest district personnel and map out ideas for construction of new trails and improvements on some of the many trails already existing in the forest. The Friends are a truly multi-user group, with representatives from the equestrian community, mountain bikers, and hikers working together to make sure that the needs of all these diverse users are considered.

Once the ground dries out this summer, the Friends will coordinate their efforts with the Pennsylvania Equine Council Trail Stewardship Program to work on the water crossing on Jackson Trail in Sideling Hill. The improvements will make the crossing safer for hikers, bikers, and equestrians. Additionally the group will be working on improving more of the trails in the Martin Hill area and they have adopted the history trail in Sideling Hill area.



Photo Credit: Friends of Buchanan

Maintaining trails for hiking and horseback riding are top goals of Buchanan State Forest.



Photo Credit: Friends of Buchanan



Photo Credit: Pam Metzger

Next on the calendar is a **Keep PA Beautiful/Adopt a Highway** event for clean up on Route 915 that goes for several miles through the forest. The work date planned is for April 13, 2019. Interested volunteers can get in touch with Karen Rosenberger at donros@frontiernet.net.

The Friends of Buchanan State Forest/Martin Hill meet the first Tuesday of the month (except November, December, and January) at the West Providence Municipal Building, 81 West Fifth Street, Everett, PA. Check out their Facebook page (Friends of Buchanan State Forest) for more information.

The Friends and forest staff met in 2015 to review existing trails and chart their course.

More Friends In Action:



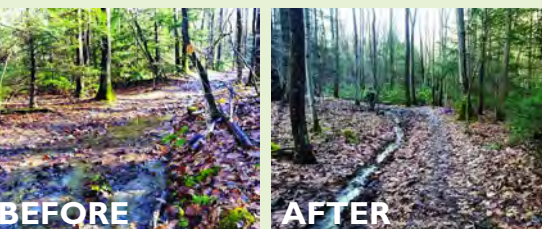
Photo Credit: Friends of Goddard

Thanks to a last-minute 2018 fundraising push, the **Friends of Goddard** have purchased a new playground. Fundraising efforts continue for the money needed to prepare the site but the group is that much closer to realizing a dream.

Congratulations to the **Friends of Big Pocono**! Their signature project is restoration of the Cattell Cabin at the top of the mountain. Raising the funds and doing the work themselves, the Friends have managed to bring this significant piece of the park back from its use as a storage shed to a life-size interpretive exhibit. And for that they received a PEP (Preserve Enhance Protect) Award from the Monroe County Historical Association at their dinner on February 24.



Photo Credit: Friends of Big Pocono



On the first Saturday of every month, the **Friends of Ohioyle** are on the trails of the park doing maintenance and construction. January kicked off on the wet (very wet) Meadow Run Trail. These photos show what it looked like before the project began and after. The work is not done so come out and help them make it better for everyone!

Trivia #4:

In 2007, how many volunteer hours were donated by PPFF Friends groups?

Speaking of monthly trail days, the **Friends of Ridley Creek** are out on the first

Saturday, as well. Now thanks to these hard working volunteers, the park's White Trail has a new footbridge.

YOU Made it Happen

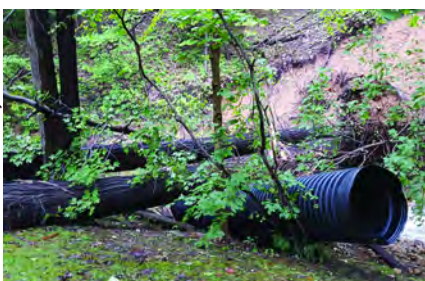


Photo Credit: Marci Mowery

Assessing Flood Damage

PPFF staff toured some of the park and forest areas that were impacted by flooding in 2018. Rains impacted public lands across the state, knocking out roads and bridges, impacting trails, and putting pressure on the system.



Photo Credit: DCNR

A New Set of Beach Wheels

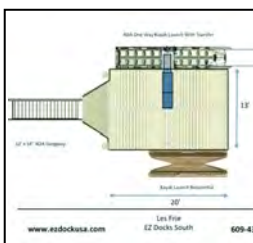
Visitors to Black Moshannon State Park might notice new wheels on the beach. Your silent auction donations and bids, combined with funds from the Friends of Black Moshannon State Park, purchased a new Balloon Chair—a specialized wheelchair that allows the user to access the beach. Keep an eye on the park's Facebook page to learn more about how to reserve the chair when visiting the park.



Photo Credit: DCNR

Docks Restoration

Visitors to Moraine State Park will be welcomed with updated and repaired docks throughout the park. The Pennsylvania Parks and Forests Foundation, in partnership with the Friends of Moraine, McConnells Mill, Jennings Association, and the Moraine Preservation Fund, provided funding for the materials, with work provided by the Pennsylvania Outdoor Corps.



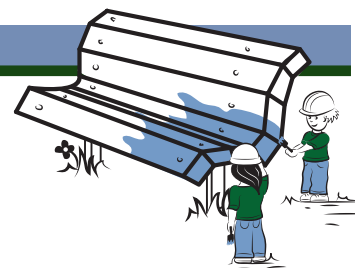
Construction on Adaptive Kayak Launch Underway

Work will begin this spring to place an adaptive kayak launch at Little Buffalo State Park. We are currently at 86 percent of our fundraising goal of \$51,000. To make a donation, please visit: <http://bit.ly/LittleBuffDock>.



Photo Credit: Friends of Keystone

Friends groups tackle big projects that make a big difference and little projects that can make an even bigger difference. The **Friends of Keystone** invested a small amount of money in educator Jean Keene's monarch butterfly tagging in hopes that efforts like these can help save this marvelous creature from extinction. A decision on whether it will be listed on the Endangered Species List is expected in June of this year.



Educational Kiosks Unveiled

Learning about the history of and finding your way around Oil Creek State Park just became easier with the creation of new educational kiosks. Thank you to PNC Foundation for supporting this project.



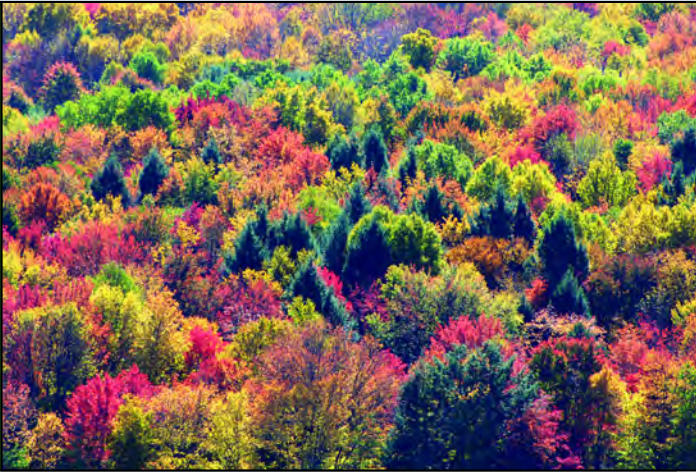
Photo Credit: Marci Mowery

Women in Conservation

PPFF President Marci Mowery participated in the REI Force of Nature Women's Camping event to talk about the roles of women in conservation and to show the Mira Lloyd Dock documentary.

2018 PPFF's "Through the Seasons" Photo Contest Results!

PEOPLE'S CHOICE BEST IN SHOW



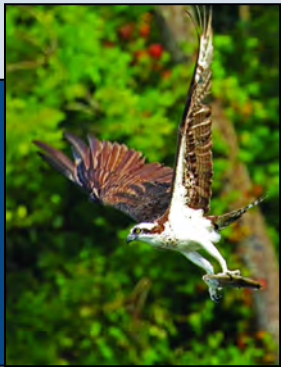
Jennifer Esken,
Lackawanna State Park

CRITICS' CHOICE BEST IN SHOW



Bruce Walkovich,
Susquehannock State Forest

FUN IN THE OUTDOORS



FIRST PLACE: Phyllis Terchanik, Prince Gallitzin State Park



SECOND PLACE: Jill Cook, Ricketts Glen State Park

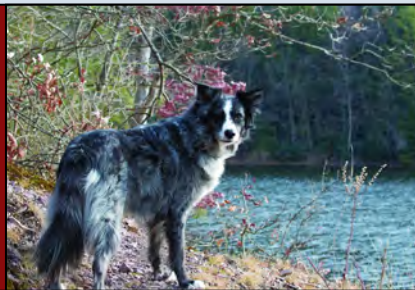


CRITICS' CHOICE: Rusty Glessner, Forbes State Forest

DOGS IN THE OUTDOORS



FIRST PLACE: Brian Hare, Nockamixon State Park

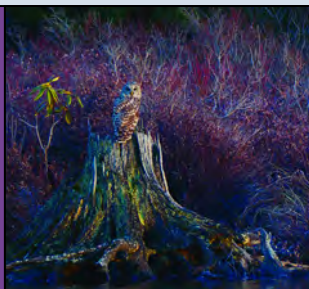


SECOND PLACE: Joseph Bove, Tuscarora State Park



CRITICS' CHOICE: Jennifer Ulmer, Bald Eagle State Forest

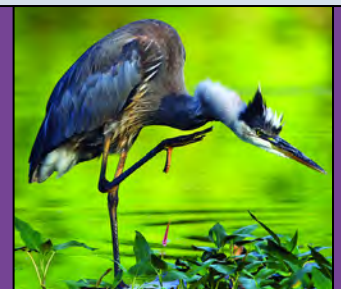
BEAUTY ALL AROUND



FIRST PLACE: Patrick Firment,
Black Moshannon State Park



SECOND PLACE: Kyle Yates, Clear Creek State Park



CRITICS' CHOICE: Jimmy Marz, Presque Isle State Park

CATEGORIES INCLUDE:

Selfie

Dogs In the Outdoors

Other Wildlife Sightings

Park and Forest Adventures

Motion

Intergenerational Joy

Young Photographers
(ages 12-17)

Trivia #5:
PPFF's annual
photo contest began
in 2010 with a focus
on what?

A Picture is Worth a Thousand Words

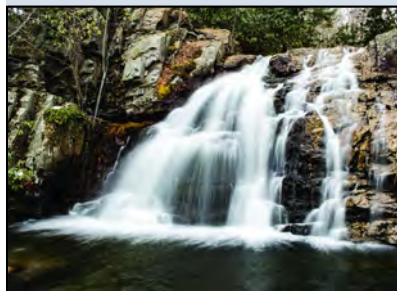
2019 PHOTO CONTEST

The annual PPFF "Through the Seasons" photo contest is a great opportunity to convey through pictures why our state parks and forests are special to you and to show off your photography skills—whether amateur or professional!

DEADLINE TO SUBMIT PHOTOS IS SEPT. 4, 2019

The winning photographs will be featured on PPFF's website, Facebook page, newsletter, and other electronic and print communications, as well as a state-wide gallery tour (dates and locations are being finalized)!

All photos must be taken in a Pennsylvania state park or forest. For more information about categories and prizes, as well as a complete set of contest rules and submission details, visit <http://bit.ly/2019PPFFPhotoContest>



FIRST PLACE: Steven Valinski, Locust Lake State Park



SECOND PLACE: Clare Kaczmarek, Linn Run State Park

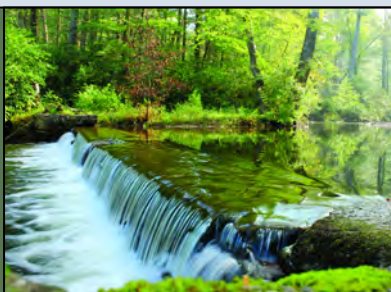


CRITICS' CHOICE: Colin Xu, Pinchot State Forest

**OFF THE
BEATEN
PATH**



FIRST PLACE: Crystal Hunt, Pine Grove Furnace State Park

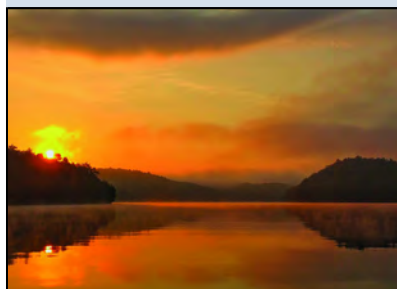


SECOND PLACE: Liz Mickley, Caledonia State Park

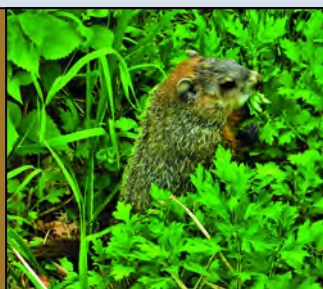


CRITICS' CHOICE: Linda Stager, Colton Point State Park

**BUILT
ENVIRONMENT**



FIRST PLACE: Lilly Zhang, Marsh Creek State Park



SECOND PLACE: Caitlin Wert, Fort Washington State Park



CRITICS' CHOICE: Trent Stross,
Sinnemahoning State Park

**YOUNG
PHOTOGRAPHERS
(AGES 12-17)**

PENN'S WOODS

CRADLE OF CONSERVATION

Newest Conservation Heritage Documentary

The broadcast premiere of *Penn's Woods: Cradle of Conservation* occurred Thursday, Jan. 17. The hour-long program traces the state's history of natural resource extraction and renewal.

Visit www.PaConservationHeritage.org to learn more about the project and to view the documentary.



History Highlighted Through Story Maps

A new feature has been added to the Pennsylvania's Conservation Heritage website. Check out 125 Years of Preservation and Investment via a new story map: www.PaConservationHeritage.org/story-map



Memorial or Honorary Gifts You can honor the memory of a special person or joyous occasion while supporting PPFF's work in conservation, recreation, education, and volunteerism in our state parks and forests. Send gifts to: PPFF, 1845 Market Street, Suite 202, Camp Hill, PA 17011

or download a form at www.PaParksAndForests.org



Couple Completes Passport While Taking a Trip Down Memory Lane



Matt and Connie Horne of State College got the final stamp in their Pennsylvania State Parks and State Forests Passport for Poe Valley State Park on Nov. 3, 2017. Poe Valley was a conscious decision for the Hornes' final stamp—it was the first Pennsylvania State Park they visited on one of their first dates in October 1979! To get your own Pennsylvania State Parks and Forests Passport, visit www.PaParksAndForests.org

Join PPFF in Giving Back!



On May 3, PPFF will participate in Give York, one day of online support for over 200 nonprofit organizations doing great things for York County's citizens. Beginning at midnight, visit www.givelocalyork.org/organizations/pennsylvania-parks-and-forests-foundation to make your donation to PPFF!

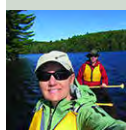
A New Leadership Team

In November, a new leadership team was chosen for PPFF's Board of Directors

with Brad Mallory, *Chairman*; Tina Molski, *Vice-Chair*; Jim Grace, *Treasurer*; and Mary Soderberg, *Secretary*.



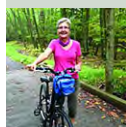
Brad Mallory Brad's prior work experience includes executive positions with the Pennsylvania Department of Transportation, Michael Baker Corporation and the Pennsylvania Turnpike Commission. Brad's proven track record in mergers and acquisitions and organizational development, as well as his enjoyment of state parks and forests will be advantageous to his work as PPFF's Chairman.



Tina Molski Tina is the current Director of Operations for REI's East Coast Distribution Center. Tina is an avid user of state parks and forests and wants to ensure that they are available for recreation and educational purposes for all.



Jim Grace Jim is a recent retiree from the Goddard Chair in Forestry and Environmental Resources at Penn State University, as well as State Forester and Deputy Secretary of Parks and Forestry at DCNR. Jim was central to Pennsylvania's state forests becoming the nation's first certified public forest.



Mary Soderberg Mary has more than 30 years of experience working and volunteering in Pennsylvania state government, including the Pennsylvania House of Representatives and the Pennsylvania State System of Higher Education. Additionally, Mary is the vice chair of the Friends of Pine Grove Furnace State Park.

PPFF Board of Directors Seeking Candidates

PPFF is seeking qualified candidates to serve on its all-volunteer board of directors. Directors are elected to serve three-year terms, and are eligible to serve two terms. Candidates should possess proven leadership skills, should have prior experience in nonprofit governance and fundraising, and be willing to donate time to fulfill the mission of the organization.

Desired qualities and talents include nonprofit fundraising, human resources, business development, national industry perspective, and media/public relations work.

PPFF strives to develop a board that is reflective of the Pennsylvania's parks and forests users and residents.

For more information, visit www.PaParksAndForests.org

Penn's Woods Need Your Help!

Forbes State Forest, with nearly 60,000 acres of land in Fayette, Somerset, and Westmoreland counties boasts the highest point in Pennsylvania—Mt. Davis. The vistas and miles of hiking, biking, and snowmobile trails are very popular, too. All of these treasures need helping hands. If you are looking to make room in your schedule to volunteer, then becoming a Steward of Penn's Woods might be perfect for you or your group. For a list of locations, including Forbes State Forest and projects, visit our website at www.PaParksAndForests.org/initiatives/stewards-of-penns-woods





1845 Market Street,
Suite 202,
Camp Hill, PA 17011
(717) 236-7644
www.PaParksAndForests.org



NON PROFIT ORG
U.S. POSTAGE
PAID
HARRISBURG, PA
PERMIT #560

conserve enhance enjoy

Funds for Education Kits!

Students across the state will benefit from education kits focused upon watershed education that were purchased using donations to PPFF through the Educational Improvement Tax Credit program.

*With appreciation to Troegs Brewing, Waste Management,
Mid Penn Bank, and Weis Markets.*



MEMBERSHIP

If your current membership has expired, visit our website today <http://bit.ly/JoinPPFF> to renew or use our form below. New members, complete the form and become a supporter of your parks and forests!

To become a member, fill out the information below and mail this form with your check (made payable to PPFF) in an envelope to:

- ☐ \$25 Single Membership ☐ I'd like to donate extra money to support the work of PPFF!
☐ \$35 Family Membership \$ _____

Name: _____

Address: _____

Phone: _____

Email: _____

PA Parks & Forests Foundation
1845 Market Street, Suite 202
Camp Hill, PA
17011



*With your membership, receive a
sticker of our 20th anniversary logo*