

# Art in the Parks

A Pennsylvania State Parks Coloring Book

Join me in a  
colorful adventure!



Presque Isle  
State Park



Ricketts Glen  
State Park

Jennings Environmental  
Education Center

Black Moshannon  
State Park

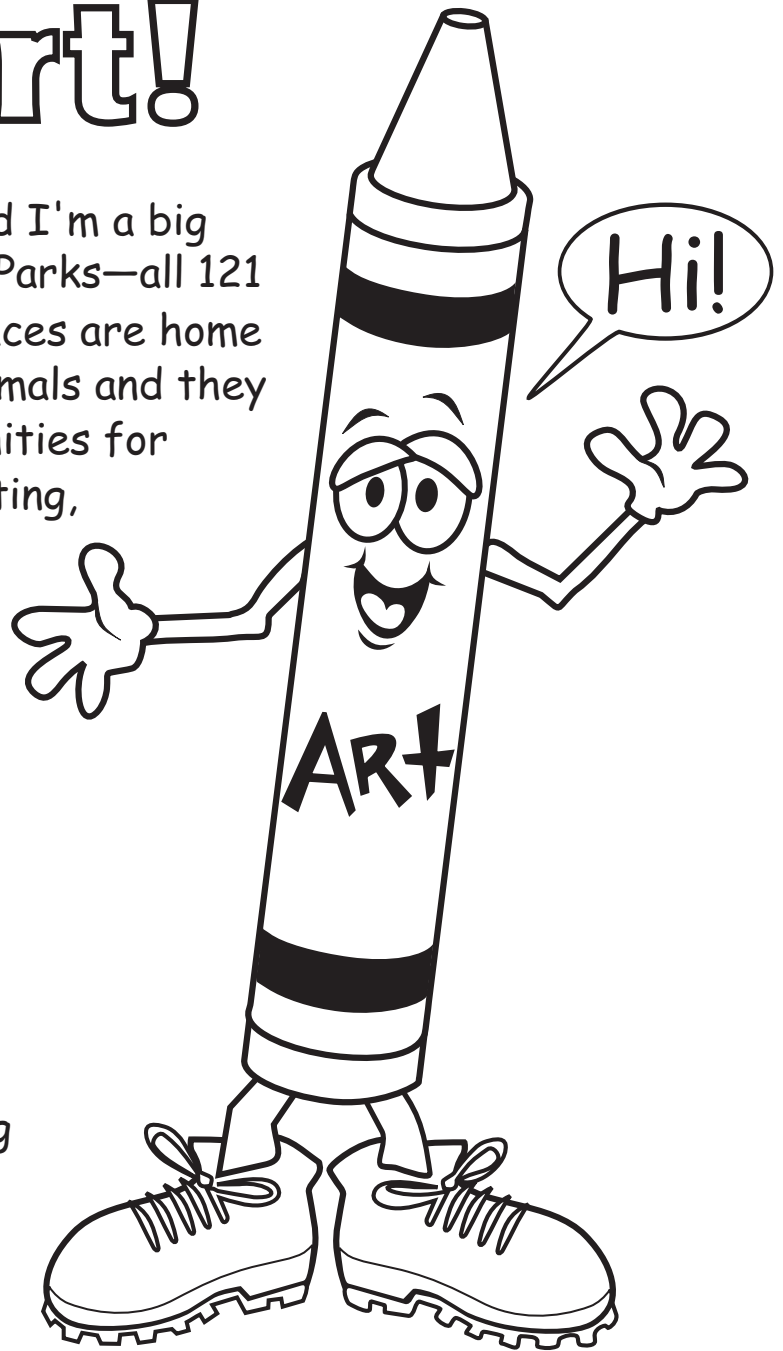
Hickory Run  
State Park



# Meet Art!

Hi there! My name is Art and I'm a big fan of Pennsylvania's State Parks—all 121 of them. These beautiful places are home to all sorts of plants and animals and they provide you and me opportunities for hiking, camping, fishing, boating, swimming and many other outdoor adventures.

The state parks bring out the creativity in everyone who visits them. Photography, painting, drawing, sand sculptures, you name it, art can be found at every park. This coloring book allows you to discover how the parks bring out your artistic side. Have fun. I hope to see you at a state park real soon!



This publication was created and funded with the joint cooperation of the Pennsylvania Department of Conservation & Natural Resources and the Pennsylvania Parks & Forests Foundation.

#### Resources:

Fowler Rhoads, Ann & Block, Timothy A. *The Plants of Pennsylvania*. Philadelphia: University of Pennsylvania Press, 2000.  
Haywood, Mary Joy & Monk, Phyllis. *Wildflowers of Pennsylvania*. Venture Graphics Inc. 2001.  
Newcomb, Lawrence. *Newcomb's Wildflower Guide*. Boston: Little, Brown and Company, 1977.  
Rhoads, Ann & Klein, William, Jr. *The Vascular Flora of Pennsylvania*. Philadelphia: American Philosophical Society, 1993.  
Sutton, Ann & Sutton, Myron. *The Audubon Society Nature Guide: Eastern Forests*. New York: Alfred Knopf, Inc. 1988.

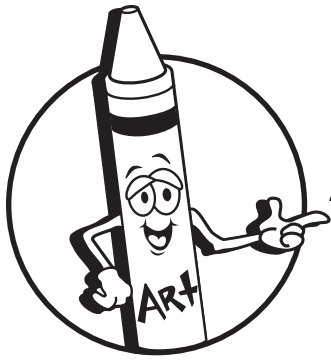
#### Credits:

Front Cover Paintings by Nancy Mendes, DCNR, PA State Parks  
Design & Illustrations by Lisa A. Sargente, DEP, Graphic Design Section

#### Photos on Back Cover:

Beach Pea provided by Presque Isle State Park  
Blazing Star provided by Jennings Environmental Education Center  
Jacob's Ladder provided by The Mary T. and Frank L. Hoffman Family Foundation/[www.all-creatures.org](http://www.all-creatures.org)  
Pinxter Flower and Pitcher Plant by Burt Ellsworth, DCNR, PA State Parks

For more information about Pennsylvania's state parks and forests visit: [www.dcnr.pa.gov](http://www.dcnr.pa.gov)  
For information in how to get involved in your state parks and forests, visit: [www.PaParksAndForests.org](http://www.PaParksAndForests.org)



# Are You Prepared?

When heading outdoors to enjoy a day in the woods, always be prepared. Make sure you take the following items:



Map



Hat



Outdoor clothing  
(suitable to the weather)



Snack



Water



First Aid Kit



Day or back pack



Whistle

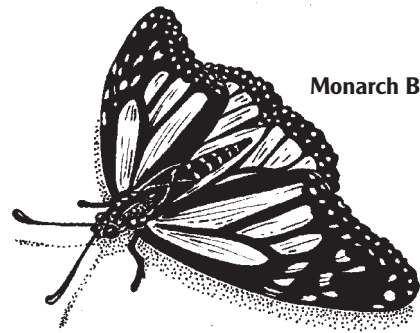


Adult

# Respect Our Natural World

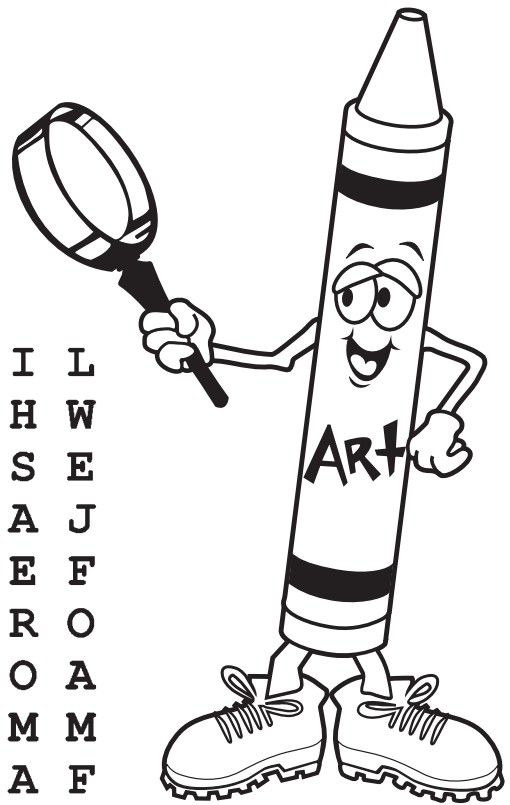
Practice the following skills to be a caretaker of our great outdoors:

- Observe wildlife from a distance.
- Never pick plants.
- Walk lightly and stay on trails. No shortcuts!!!
- Carry in and carry out-leave no trash behind.
- Camp only on ready-made campsites.
- Build campfires in existing fire rings.
- Gather firewood that is on the ground and no bigger than an adult's wrist.
- Never cut or break sticks from dead, living, or downed trees.
- Make sure campfire is completely out and cold to the touch.
- Pick up all spilled food; it discourages wildlife from becoming pests and leaves the place neat for the next visitor.
- When pooping in the woods, bury your waste about 6 inches deep (and 200 feet away from water.) Cover the hole with soil. Carry out the used toilet paper.
- Avoid making loud noises as it can startle wildlife and disturb other visitors.



Monarch Butterfly

# Word Search



B L A Z I N G S T A R B V I L  
L E M R A A E N I P E T I H W  
I P Y R R E B E C I V R E S E  
T I P L U P E H T N I K C A J  
T T N T L H G S I X S O R E F  
L C R B E C D U K T U I D R O  
E H E L Z A E B B E N H E O A  
B E F S A E S E M R D E E M M  
L R T D H B G L I F E T W A F  
U P E L H O N B N L W S L C L  
E L E H C R I B W O L L E Y O  
S A W E T N D O D W X M W S W  
T N S E I R D H V E C L E M E  
E T T E W P O N S R F D J Q R  
M Q U A K I N G A S P E N F F

## Find These Native Plants:

BEACH PEA

BLAZING STAR

FOAM FLOWER

HOBBLE BUSH

LITTLE BLUESTEM

NODDING SEDGE

PINXTER FLOWER

JACK IN THE PULPIT

WITCH HAZEL

PITCHER PLANT

SERVICEBERRY

SWEET FERN

WHITE PINE

YELLOW BIRCH

QUAKING ASPEN

SUNDEW

JEWELWEED

SYCAMORE



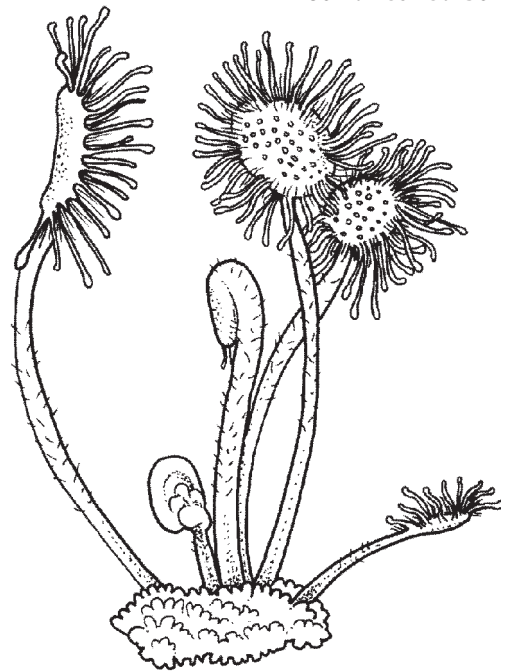
# Native Plants

A simple definition of a Pennsylvania native plant is one that was found in Pennsylvania prior to Europeans arriving. Pennsylvania has over 3081 species of native trees, shrubs, flowers, and other forms of plants. Native plants might be found in your neighborhood, at a state park, or in special protected areas. A few fun native plants found in Pennsylvania are:

**Pitcher Plant**



**Round-leaved Sundew**



**Spotted Touch-me-not (jewelweed)**



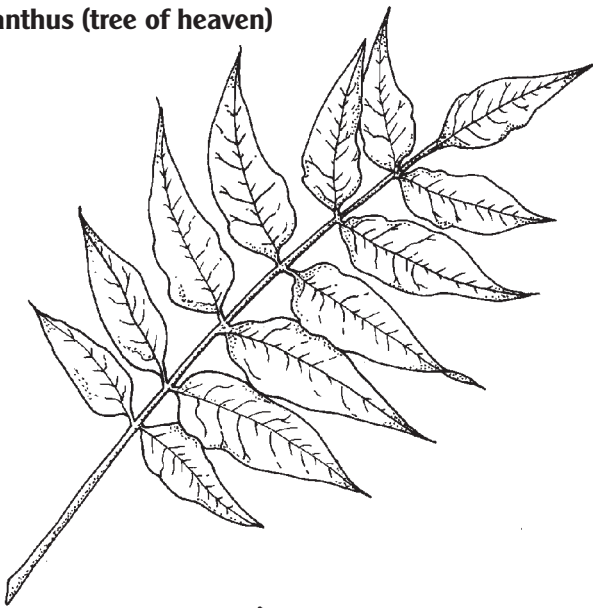
**Witchhazel**

# Invasive Plants

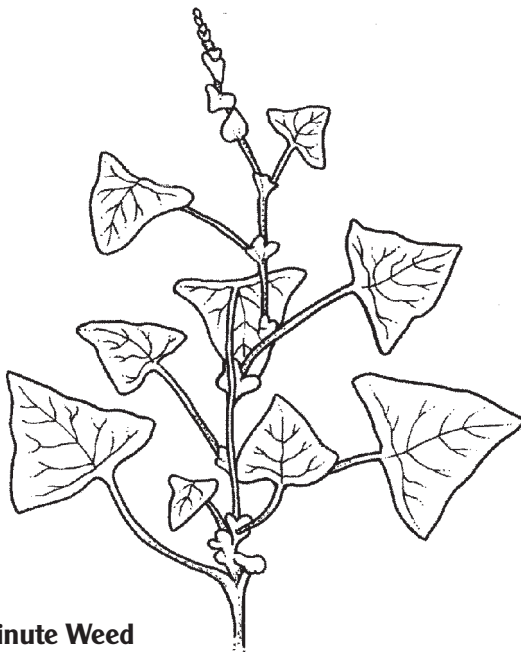
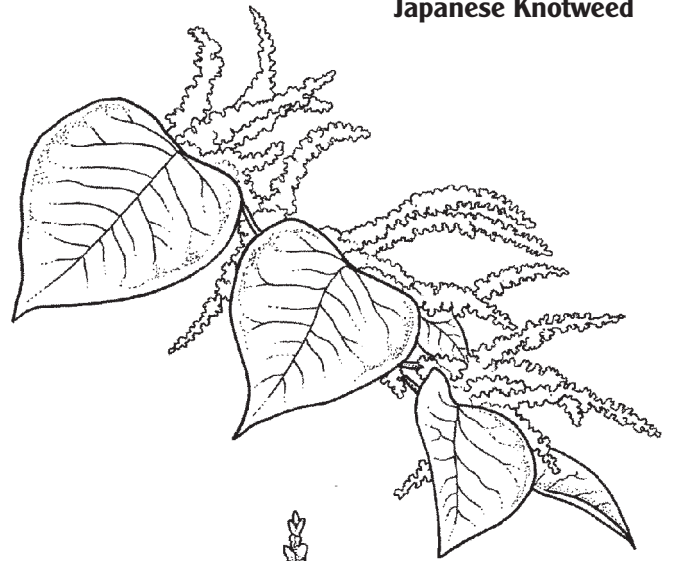
An invasive non-native plant is one that is not natural to an area and that may grow out of control once introduced. These invasive non-native plants often do not provide as much food and other habitat value as native plants do, and often crowd out native plants. Some invasive plants even release toxic chemicals that kill other plants!

The following are a few of the invasive plants common to Pennsylvania. These plants cause problems, and solutions are being sought to remove them from the landscape.

**Alianthus (tree of heaven)**



**Japanese Knotweed**

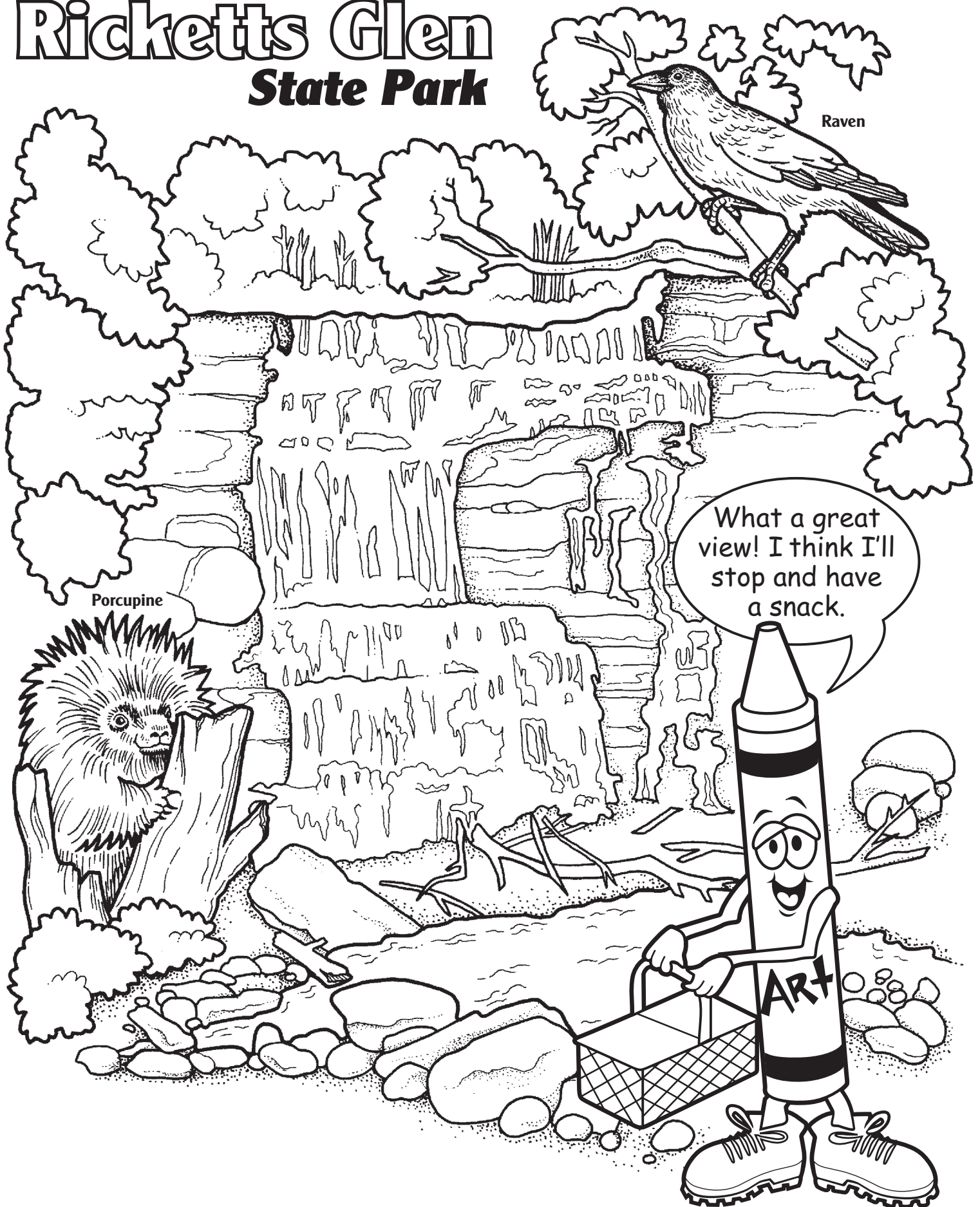


**Mile-a-minute Weed**



**Purple Loosestrife**

# Ricketts Glen *State Park*

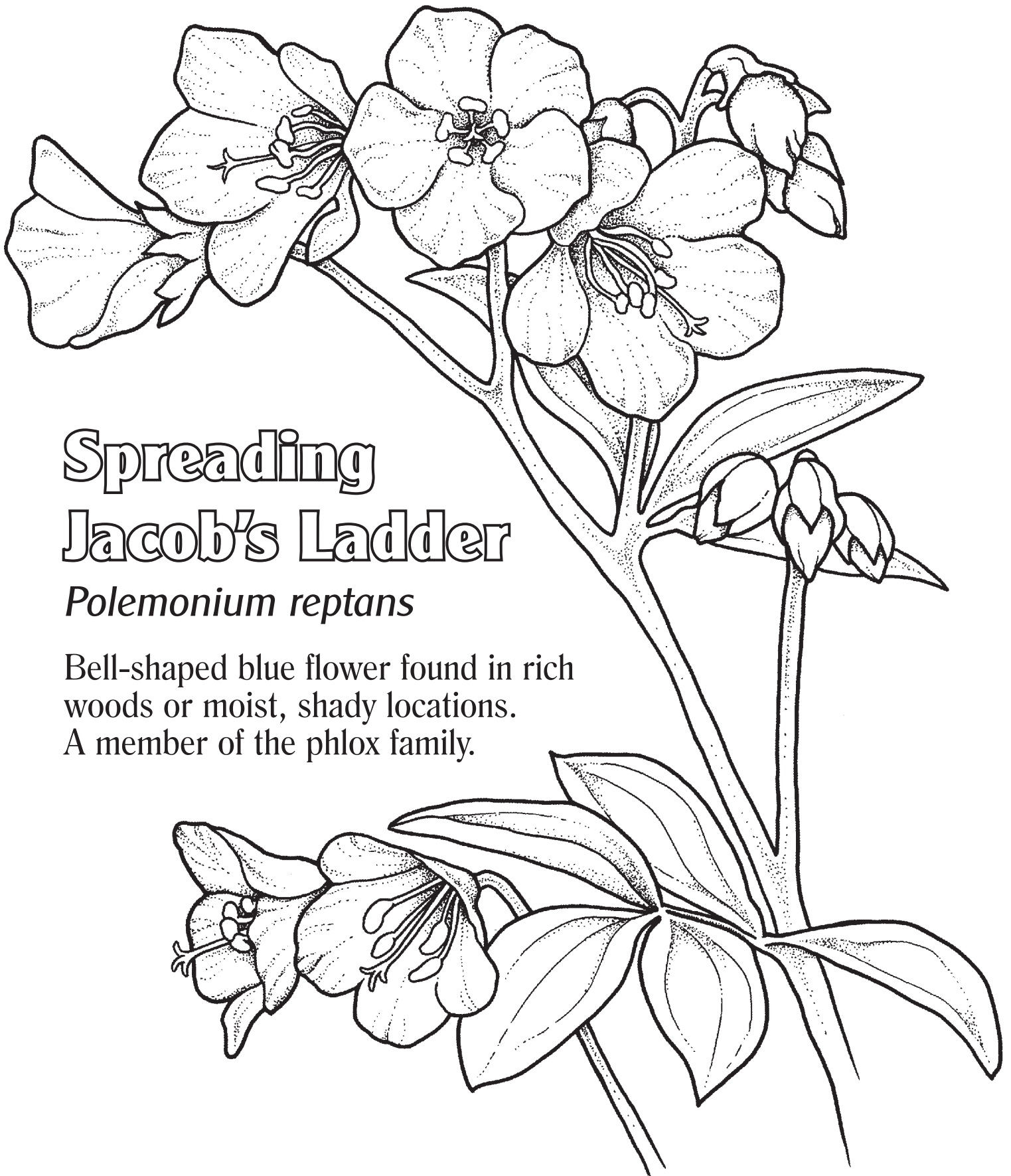


Raven

Porcupine

What a great  
view! I think I'll  
stop and have  
a snack.

ART



# Spreading Jacob's Ladder

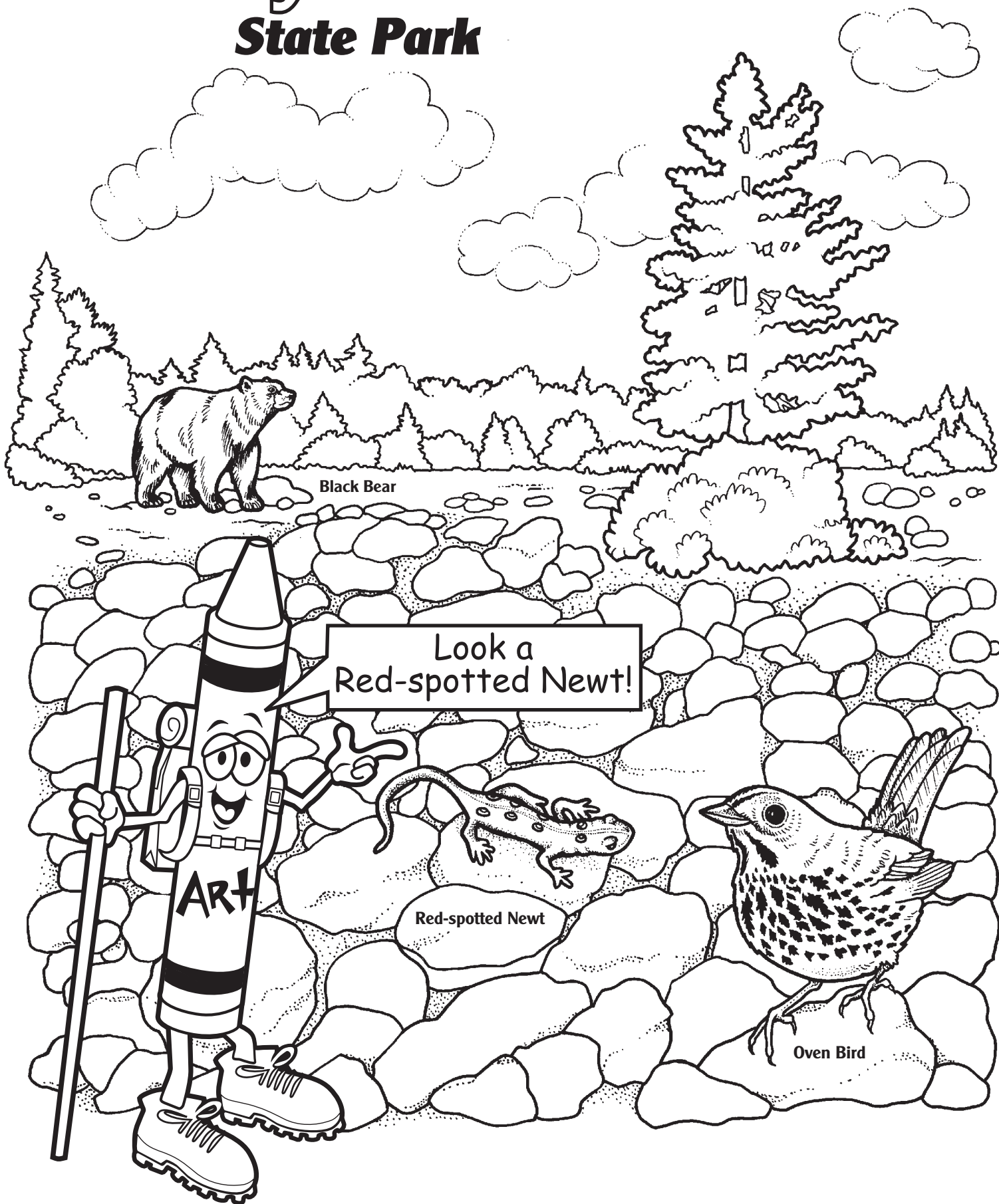
*Polemonium reptans*

Bell-shaped blue flower found in rich woods or moist, shady locations.  
A member of the phlox family.



# Hickory Run

## State Park





# Pinxter flower

*Rhododendron periclymenoides*

A deciduous shrub with clusters of vase shaped flowers. Grows from 4 to 6 feet tall in woodlands.



# Jennings

## **Environmental Education Center**



This is a great place  
for taking pictures!

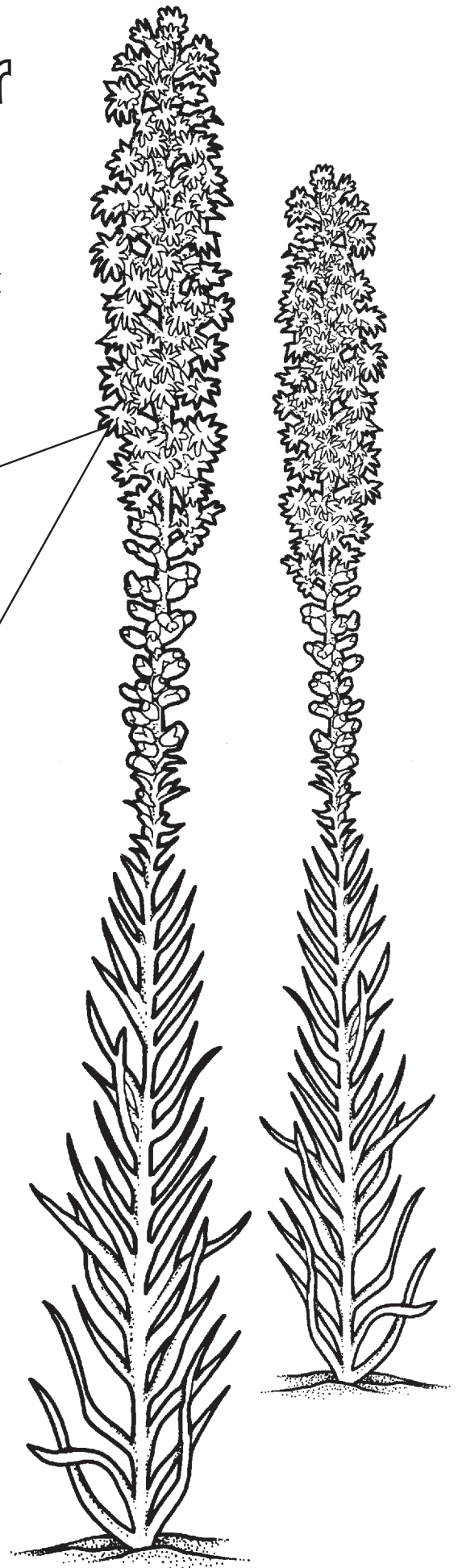
Viceroy Butterfly

Meadow Jumping Mouse

# Dense Blazing Star

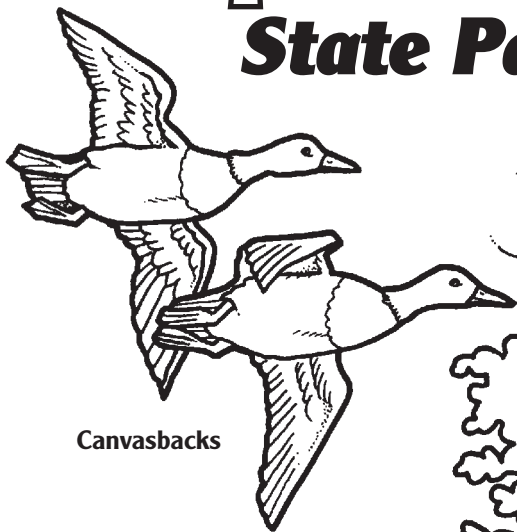
*Liatris spicata*

Rose-purple flowers cover a 1 to 2 foot spike that is 2 inches across. Flowers at top of spike open first. Grows in moist fields, fence rows and roadsides.





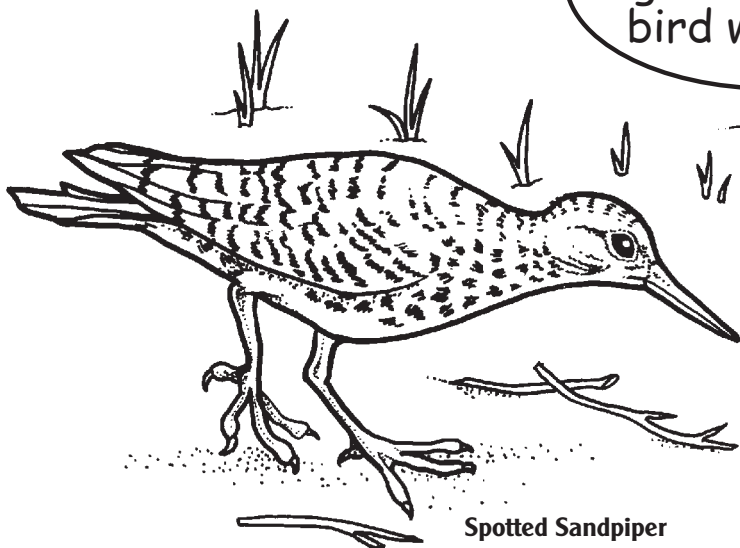
# Presque Isle State Park



Canvasbacks



This looks like  
a great place for  
bird watching!



Spotted Sandpiper



# Beach pea

*Lathyrus japonicus*

Found on sandy or gravelly shores. Purple flowers about 3/4 to 1 inch long in clusters of 6 to 10. Leaflets broad and blunt.

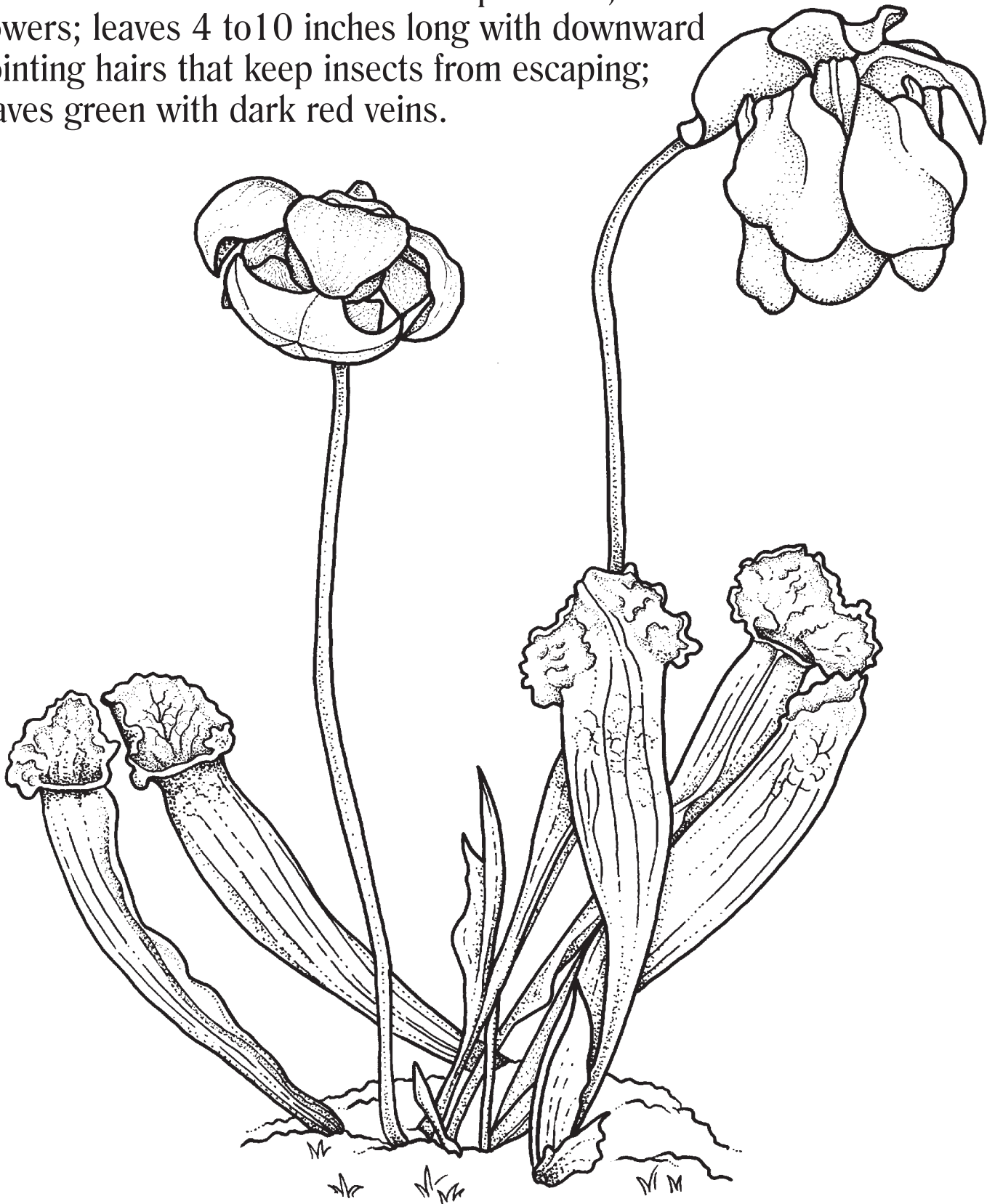


# Black Moshannon State Park



# Pitcher plant *Sarracenia purpurea*

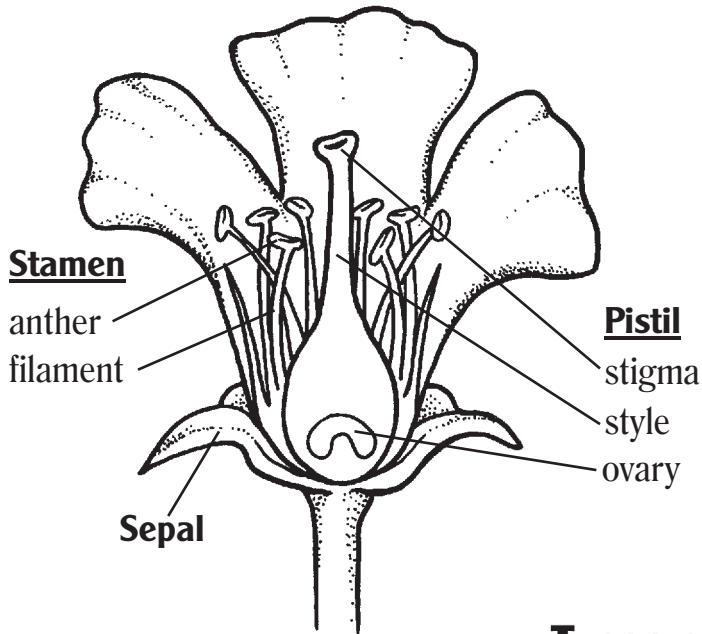
Grows only in sphagnum bogs; eats insects; pitcher shaped hollow leaves hold water and entrap insects; dark-red flowers; leaves 4 to 10 inches long with downward pointing hairs that keep insects from escaping; leaves green with dark red veins.



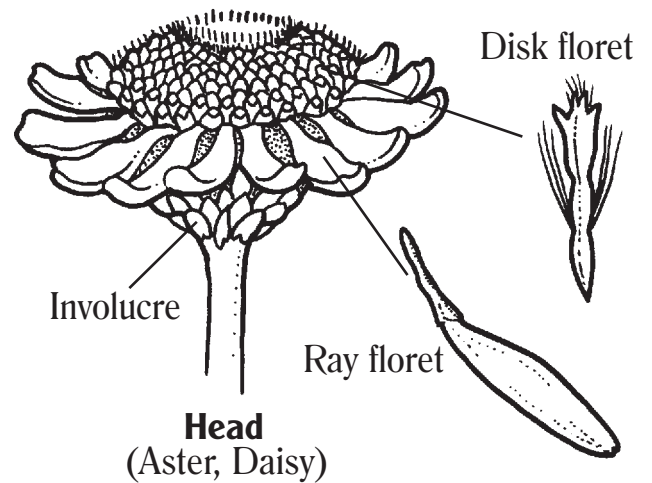


# Structure, Parts and Types of Flowers

## Flower Structure:



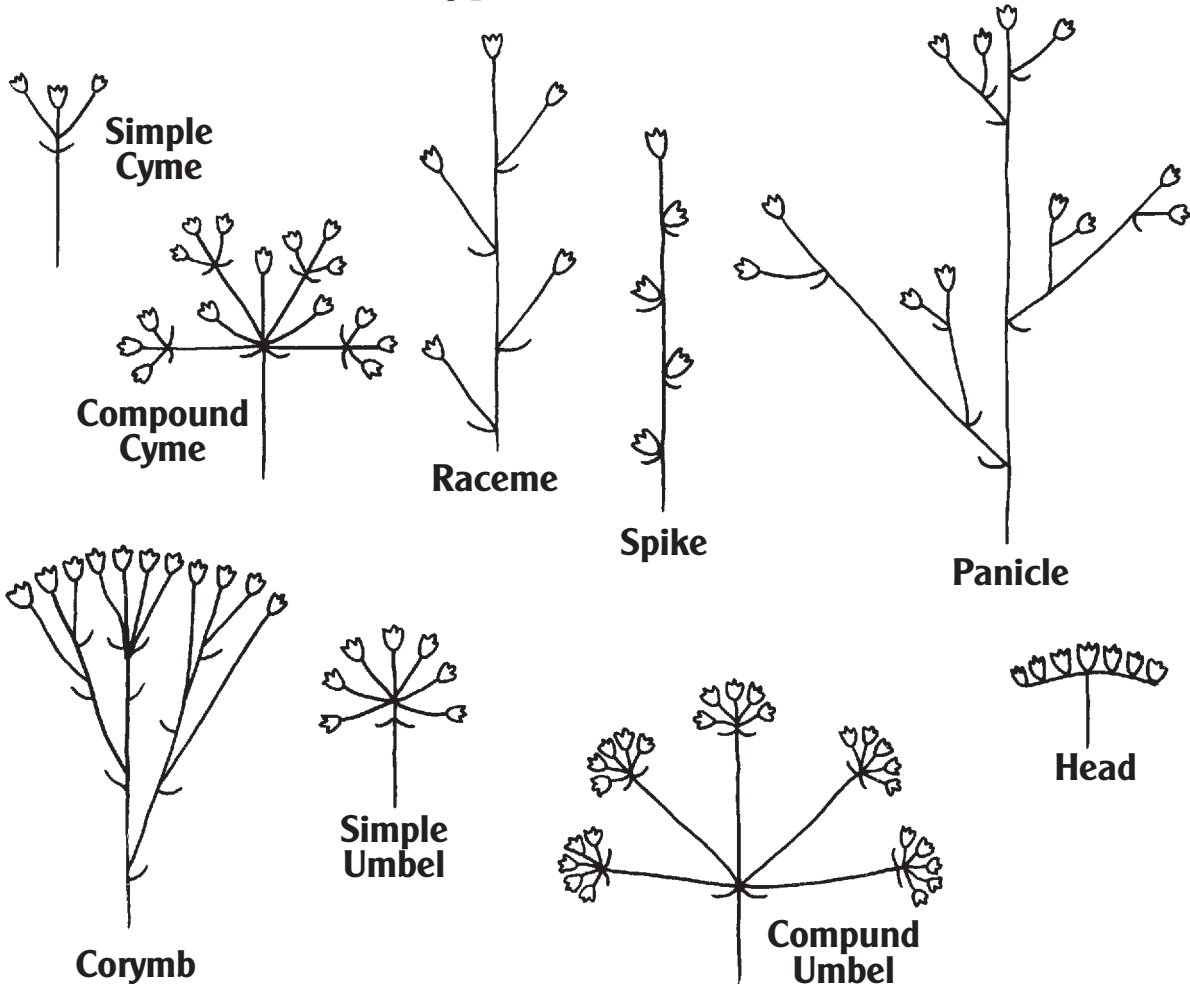
## Flower Parts:



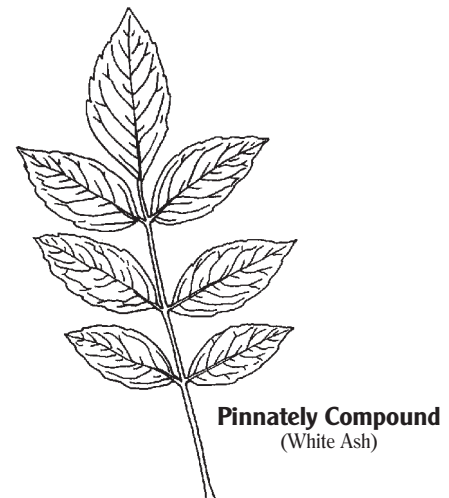
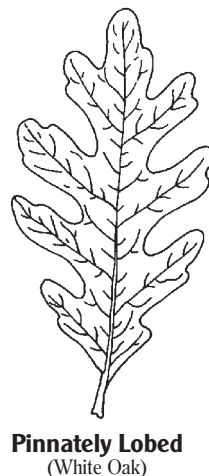
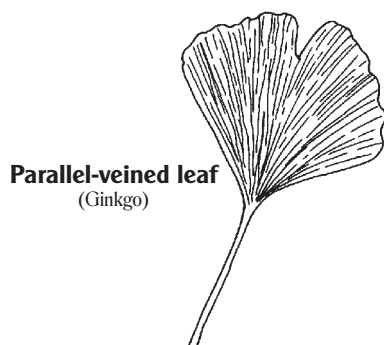
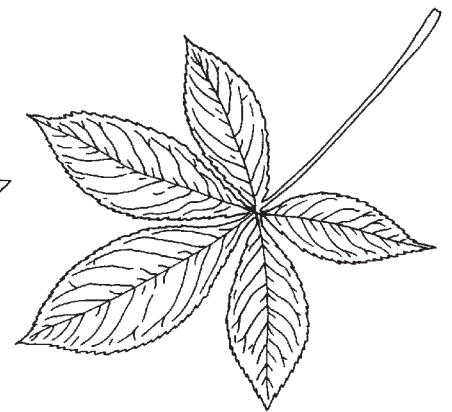
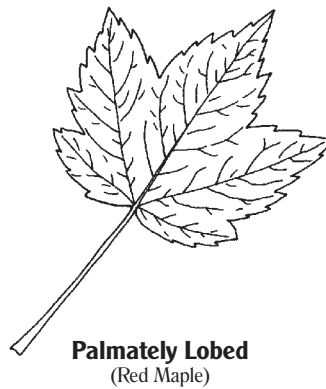
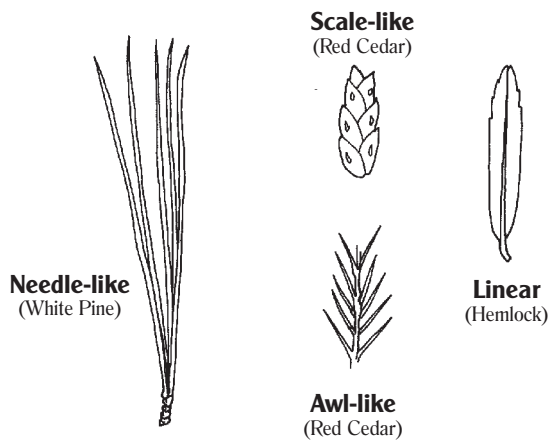
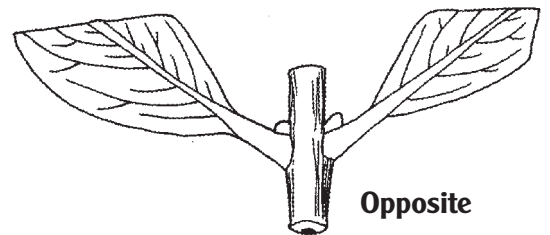
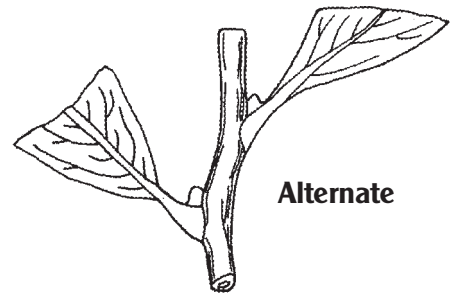
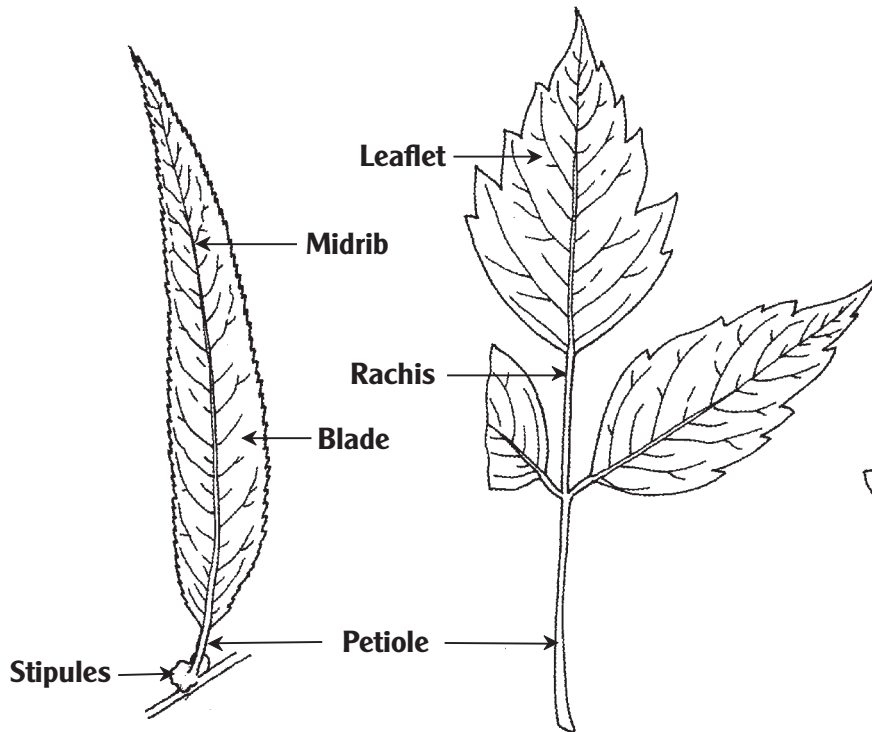
---

## Types of Flowers:

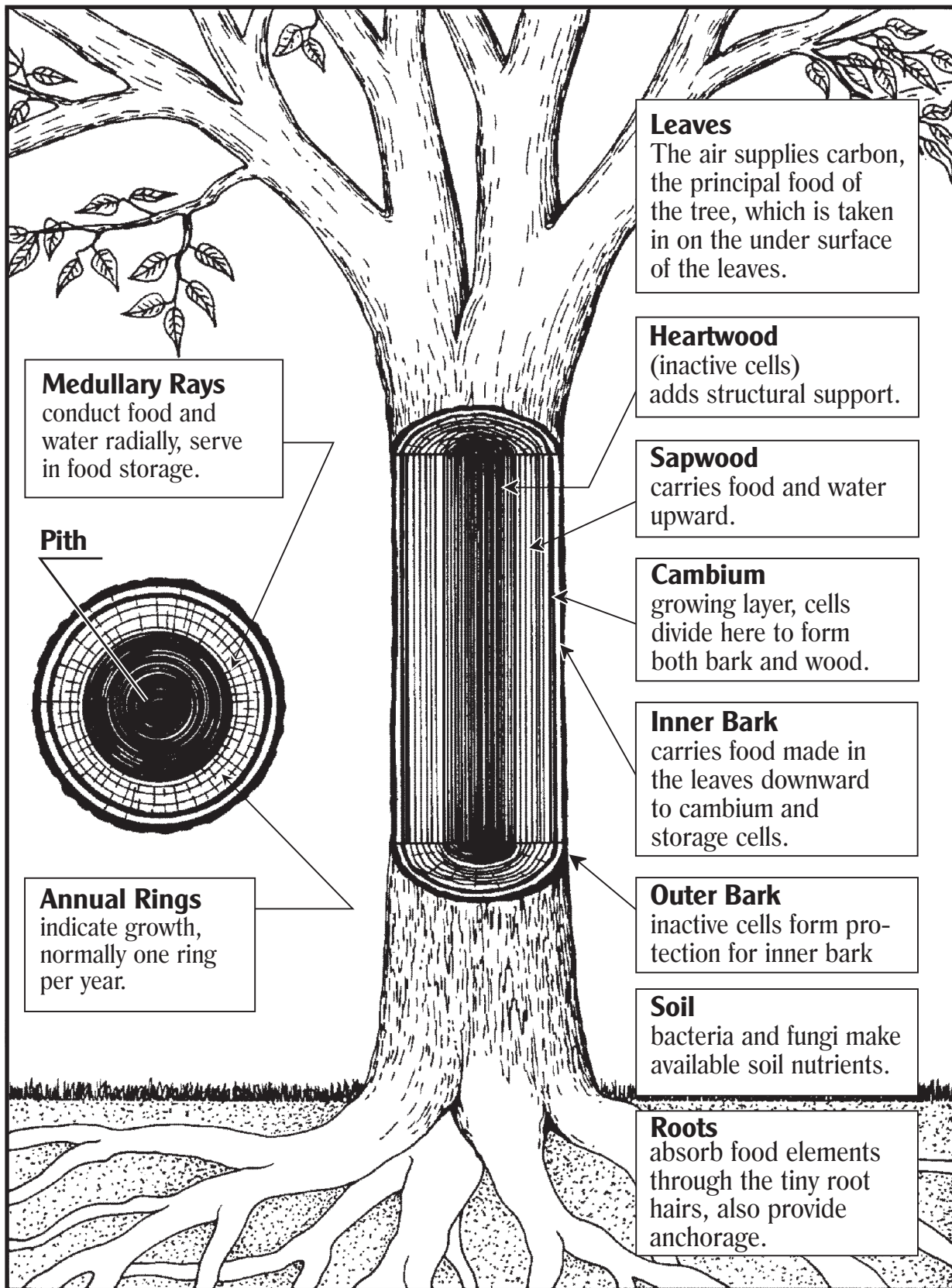
---



# Parts, Types, and Positions of Leaves



# Parts of a Tree



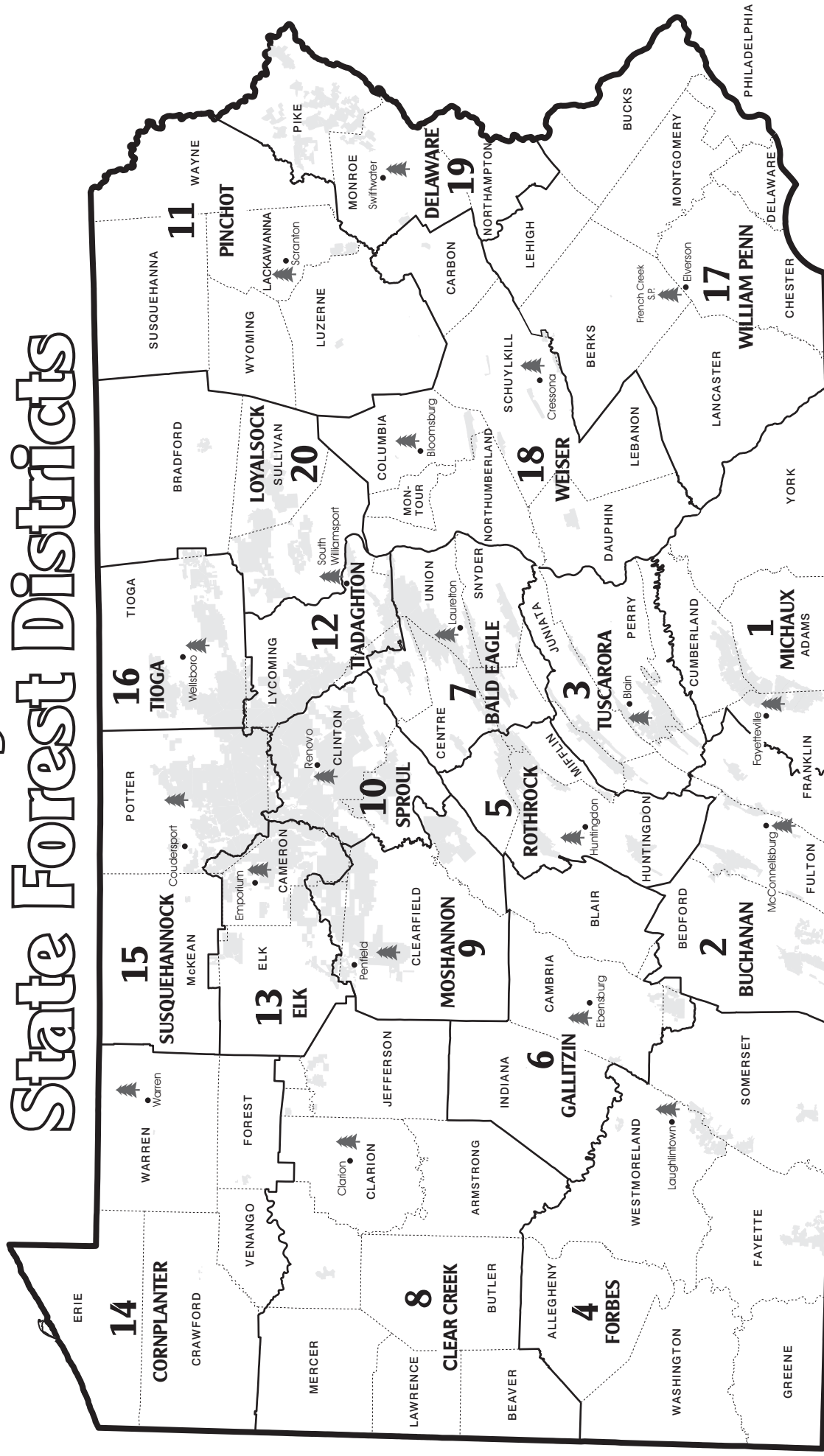
Courtesy of the New Tree Experts Manual by Richard R. Fenska

[illegible]



# Pennsylvania

## State Forest Districts



- FOREST DISTRICT OFFICE
- STATE FOREST LAND
- TOWN



**pennsylvania**  
DEPARTMENT OF CONSERVATION  
AND NATURAL RESOURCES

# Featured Plants:



Beach Pea



Pitcher Plant



Jacob's Ladder



Pinxter Flower



Blazing Star

PENNSYLVANIA  
**Parks & Forests**  
FOUNDATION

It's just our nature to help!

[www.PaParksAndForests.org](http://www.PaParksAndForests.org)



**pennsylvania**

DEPARTMENT OF CONSERVATION  
AND NATURAL RESOURCES

[www.dcnr.pa.gov](http://www.dcnr.pa.gov)